

***Danesborough Snippets for June 2022 – Cllr David Hopkins / Cllr Victoria Hopkins / Cllr Alice Jenkins***

## **Special bulletin**

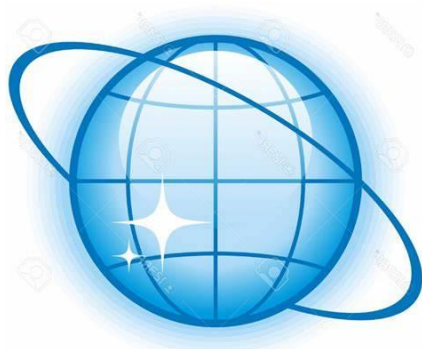


**In this Issue**



### **Milton Keynes wins city status!**

**Milton Keynes is finally being made a city as part of The Queen's Platinum Jubilee celebrations.**



### **New MKC Website Launches Next Week**

MK Councils new and more modern council website will be published early next week. Our site gets more than 8 million hits every year. It's been a major undertaking to move all the pages,

complex forms, and other material into the new format, making sure everything meets new accessibility laws for local authorities.

The Council has taken the opportunity to streamline what's on there from more than 9,000 pages to around 2,500. The Comms team took on responsibility for the website last year.

It's inevitable that there will be some broken links despite everyone's hard work, so if you spot anything that needs attention, please send a message to [tina.surti@milton-keynes.gov.uk](mailto:tina.surti@milton-keynes.gov.uk) or [communications@milton-keynes.gov.uk](mailto:communications@milton-keynes.gov.uk) and they'll help, or point you to the team's web author.



I was informed on 8 June that it is intended to take the **Swan Hill Development** application to the 7th July Planning Committee at MKC; this is the land south of Frosts and between Frosts and the railway station. The report is in progress.

The contact is Robert Brigden  
Principal Planning Officer (East Team) - Development Management  
Tel: 07920 146474  
Web: [www.milton-keynes.gov.uk/planning](http://www.milton-keynes.gov.uk/planning)  
Milton Keynes Council | Civic | 1 Saxon Gate East | Milton Keynes | MK9 3EJ

As soon as I have the report I will circulate it.

---

### **New Pavilion at Wavendon Heights**

#### **Fire Certificate**

The MK fire safety team carried out a Building Regulations consultation on 8 February 2022 for this building; we had no adverse comments.

We no longer issue Fire Certificates since legislation change, and our inspecting officers would not audit a building of this risk profile unless a concern was raised.

Regulation 38 of The Building Regulations 2010 should provide information as a starting point.

Regulation 38 of the building regulations require that:

“The person carrying out the work shall give fire safety information to the responsible person\* not later than the date of completion of the work, or the date of occupation... whichever is earlier.”

This regulation aims to ensure that information critical to the fire safety of people in and around the building is communicated to the owner, occupier and/or end-user so that the building can be operated and managed correctly.

This information will provide the Responsible Person with information with regard to the Fire Safety Precautions that have been provided on the premises. A fire safety management system should be introduced to ensure that these systems are tested and maintained.

This enables the responsible person to conduct a suitable and sufficient fire risk assessment (FRA) for the building. It will accurately record the physical fire safety precautions in place and so enable risks to the relevant persons in the building to be understood in a way that allows them to be appropriately addressed.

Regulation 38 references the term “responsible person” as having the same meaning given by article 3 of the Regulatory Reform (Fire Safety) Order 2005.

The Responsible Person is required to ensure that a Fire Risk Assessment is carried out. The fire risk assessment can either be undertaken by a competent person within the organisation (relevant guidance pdf is attached) or assistance sought from a 3rd party fire risk assessor.

We recommend that if a 3rd party accredited fire risk assessor is used, and advice regarding selecting these can be found here <https://www.nationalfirechiefs.org.uk/finding-fire-risk-assessor>. As the enforcing authority, we do not undertake fire risk assessments other than for authority premises.

From experience with community facilities, typical challenges are posed by ensuring that there are robust arrangements to ensure the safety of those renting facilities, especially if no staff are onsite.

Steve Cook - Station Commander Protection - Milton Keynes  
01908 032522 / 07786 021540

Buckinghamshire Fire & Rescue Service, MK Area Office Broughton Fire Station, Childs Way,  
Broughton, Milton Keynes, MK10 9AP.  
BFRS main enquiry line: 01296 744400  
Please visit our website at [www.bucksfire.gov.uk](http://www.bucksfire.gov.uk)

---

### **16 June is National Clean Air Day**

Air pollution (Locally – simply place your location in the box at ...!)

<https://addresspollution.org>

Time now perhaps for an MK City Council Clean Air Action Plan ?

---

### **EWR - Connecting with communities:**

EWR is restarting our face-to-face engagement with communities across the East West Rail route. The event closest to us will be in Woburn Sands on Friday 8 July, 2pm - 8pm at the Summerlin Centre, 138 Station Rd.

# VEHICLE EXHAUST IS TOXIC

Please turn off your engine  
when stationary



Idling is a frustrating and unnecessary source of air pollution. Many parents in the MumsforLungs network have repeatedly witnessed it happening outside schools, in town centres, playgrounds and at hospitals. As well as the increase in localised air pollution, leaving an engine idling wastes fuel and money.

<https://www.mumsforlungs.org/our-campaigns/idling>

Air pollution (in Woburn Sands)

Local residents have forwarded have forwarded a link.

And perhaps another point to make in our argument for a better local environment!

<https://addresspollution.org>



The contact at MK Council regarding the Homes for Ukraine scheme is [malanie.marshman@milton-keynes.gov.uk](mailto:malanie.marshman@milton-keynes.gov.uk) - 01908 252842

## EMA – support for new arrival and refugees

Continuing their work to help you support new arrivals and refugees in the MK community, the EMA network are offering the following online sessions that may be of use and interest to you.

- Ukraine Diaspora – 21 June (4.00pm – 5.00pm)

This session will help you to understand the needs of the newly arrived Ukrainian community in MK. It will explore challenges faced and outline support available to schools.

- Refugee and New Arrival network – 7 July (3.45pm – 5.15pm)

This is a great opportunity for schools and settings (early years, primary and secondary) who have received refugee/newly arrived children to come together and discuss strategies to support pupil integration into school life.

- Afghan Forum – 13 July (4.00pm – 5.00pm)

This session offers a chance to share and learn from good practice across MK schools, settings. It also considers other services in supporting Afghan children and families in MK schools.

All sessions will held via MS Teams. To book a place, simply email Janet Gleghorn with your details. [ema@milton-keynes.gov.uk](mailto:ema@milton-keynes.gov.uk)

---

FixMy

Report, view, or discuss local problems - (like graffiti, fly tipping, broken paving slabs, or street lighting)

Enter a nearby UK postcode, or street name and area:

<https://www.fixmystreet.com/>



#### **From East West Rail – Aylesbury Spur**

The question regarding the status of an Aylesbury connection to East West Rail. We are continuing to explore options on how to connect Aylesbury with our colleagues in the Department for Transport and Network Rail. The original plans would not have provided local communities with a reliable service, and this section requires more investment than originally planned. We are working with government to demonstrate that this investment represents value for the taxpayer.

We recognise how important this connection would be, however, it is essential to deliver a reliable service, and make sure that we are making the right interventions to enable that. We are working as quickly as we can, and crucially with Government to make funding available for this part of the project. At this stage of the project proposals are still in development and we unfortunately are not able to provide any further information, beyond what has already been shared.

We hope you find the above helpful and look forward to speaking with you again at future meetings of the Group. In the meantime, if you have any further questions about the project or the Group please do contact us.

The EWR Co Team

East West Railway Company Limited is a company registered in England and Wales. Registered office: One Grafton Mews, Midsummer Boulevard, Milton Keynes, MK9 1FB.

### **City of Milton Keynes**

I am writing on behalf of the council to formally thank you for your contribution to our successful city status application.

In my view, taking a more inclusive approach through the three working groups (history, community and the environment) was fundamental to our success. As a result, we managed to position the bid well, and to gather and prioritise some really brilliant content. I had some excellent feedback from the Cabinet Office on the quality of our submission which they said they all really enjoyed reading.

Once again, thank you for giving up your time so freely and for being such an amazing advocate for the City of Milton Keynes – we did it!

*Best wishes*

*Michael Bracey*

*Chief Executive*

### **Little Brickhill – Planning Panel**

<https://milton-keynes.cmis.uk.com/milton-keynes/Calendar/tabid/70/ctl/ViewMeetingPublic/mid/397/Meeting/7143/Committee/1457/Default.aspx>

#### **Application Number: 22/00028/FULMMA**

Proposal: Variation of condition 1 (Approved Plans) of permission ref. 20/00193/FUL seeking an additional parking space, move of external steps and retaining wall, the insertion of a window into the lower ground floor study, and 4no rooflights to south-east elevation relating to the demolition of existing garages and erection of one dwelling at Land North of The Clock House, Watling Street, Little Brickhill, Milton Keynes MK17 9NR

Applicant: Mr P Mayhew

Application type: Minor

Ward: Danesborough And Walton Parish: Little Brickhill

Case Officer: Tamlin Barton - Planning Officer

[tamlin.barton@milton-keynes.gov.uk](mailto:tamlin.barton@milton-keynes.gov.uk)

Team Manager: Chris Nash - Development Management Manager

[chris.nash@milton-keynes.gov.uk](mailto:chris.nash@milton-keynes.gov.uk)

**Recommendation**

It is recommended that permission/consent is granted for the reason(s) set out in section 10.0 of this report (as may be supplemented/modified in any accompanying written or verbal update to the Panel).



**Woburn Sands - Station Road - Convenience Store**

Regrettably, to amend the restrictions to Mon - Sat would mean we would be unable to enforce the restriction. If memory serves me right, the restrictions were amended to Mon-Fri 9-5, due to objections from residents on Station Road about the potential impact of visitors visiting them at the weekend.

I hope this clarifies the situation for you.

Phil Jeffs - Senior Highways Engineer

T: 01908 254055 PLEASE USE MOBILE UNTIL FURTHER NOTICE

M: 07586551322

Milton Keynes Council | Civic Offices | 1 Saxon Gate East | Central Milton Keynes | MK9 3EJ

Milton Keynes | MK6 1LY

<http://www.milton-keynes.gov.uk/>

**Forthcoming Roadworks**

TTRO-1602 ( Walton Road, Wavendon)	<a href="https://www.milton-keynes.gov.uk/sites/default/files/2022-06/Notice-of-Making-TTRO-1602%20%28%20Walton%20Road%2C%20Wavendon%29.pdf">https://www.milton-keynes.gov.uk/sites/default/files/2022-06/Notice-of-Making-TTRO-1602%20%28%20Walton%20Road%2C%20Wavendon%29.pdf</a>
NOTICE IS HEREBY GIVEN that the Council of the Borough of Milton Keynes has on 31st May 2022 made the above Order under Section 14(1) of the Road Traffic Regulation Act 1984. in order to enable Anglian Water to carry out maintenance	The effect of the above Order will be to temporarily close part of: <b>Theydon Avenue, Woburn Sands – Between Elm Grove and The Leys.</b>  Whilst the above length of road is closed the alternative route will be via Theydon Avenue, High Street, They Leys (and vice versa).

works from 27th June 2022 – 1st July 2022 (24 Hours).	
TTRO-1609 (Anglian Water June Closures	Walton Road, Walnut Tree
TTRO-1609 (Anglian Water June Closures	Theydon Avenue, Woburn Sands 14th June 2022            9:30am            12:30pm <a href="https://one.network/?tm=GB129035841">https://one.network/?tm=GB129035841</a>
Chapel Street    Woburn Sands 14th June 2022 9:30am            12:30pm	<a href="https://one.network/?tm=GB129035802">https://one.network/?tm=GB129035802</a>



**Road Works in Wavendon**

Mullan Groundworks & Civil Engineering Ltd  
 Woodside Livery Stables  
 Haynes West End  
 Bedfordshire  
 MK45 3QU  
 Tel: 01525 405220

We would like to take this opportunity to introduce ourselves as the point of contact for Mullan Groundworks & Civil Engineering Ltd. We have been appointed by Abbey Developments Ltd and Milton Keynes Council to undertake the alterations and improvements to the public highway.

**KEY POINTS**

- Works due to commence on Monday 6th June for 2 weeks.
- Walton Road (Outside Church Farm for approx. 30m) will be closed every weekday from 8.00am to 5.00pm.
- During these hours there will be a traffic diversion in place.
- Pedestrian access will always be maintained during the road closure.
- Licence No: PO22-04-04 ARN-435-05055156.

CONTACT US - 01525 405220

[Matt@mullangroundworks.co.uk](mailto:Matt@mullangroundworks.co.uk)

THANK YOU

We at Mullan Groundworks & Civil Engineering Ltd appreciate fully how troublesome



construction activities can be and we really are therefore grateful for your understanding and patience. We will do all we can to minimise any disruption to the local community. Thank you for your cooperation and support. Should you have any concerns, please do not hesitate to contact us



Planning

#### Consultation – Central Beds (Land around Lidlington / Marston Forest etc)

This planning application was originally received by Central Bedfordshire Council (CBC) on 25th May 2018. Milton Keynes Council submitted a consultation response on that application (on 11th July 2018). Details of the application and a copy of this MKC consultation response are available from the CBC website (links below).

Reference: CB18/01969/OUT

- Application details

<http://plantech.centralbedfordshire.gov.uk/PLANTECH/DCWebPages/acolnetcgi.gov?ACTION=UNWRAP&RIPNAME=Root.PgeResultDetail&TheSystemkey=609455>

- Consultation responses

<http://cbstor.centralbedfordshire.gov.uk/publicportalviewer/publicViewer.html?caseID=CB/18/01969/OUT>

CBC have received additional documents in relation to the application, which has prompted the consultation, and are currently reviewing these to understand whether it has any implications for our previous response. The Scheme of Delegation for Development Management Matters (copy attached) includes observations on applications submitted to other local planning authorities for their determination as an item that is delegated to Officers - Part B(2i).

However, the Scheme of Delegation does not include any provision to call-in an MKC consultation response to an application that is being considered by a neighbouring authority. Part A(5), which relates to call-in request by Ward Councillors and Parish/Town Councils, is solely related to decisions on planning applications. As the letter states, Central Bedfordshire Council would make the decision on this application.

There is provision in Part A(2) of the Scheme of Delegation to refer an item to committee if, in the opinion of the delegated officer, it is likely to be of a controversial nature. However, in

considering this element we first need to understand what additional documents have been submitted and their significance for our previous consultation response and the implications for MKC. I am also mindful that our substantive consultation response was not referred to committee to determine.

Obviously none of this prevents Ward Councillors or Parish/Town Councils from submitting their own consultation responses.

Jonathan Palmer MRTPI

Head of Planning

Tel: 07795475598

Milton Keynes Council | Civic | 1 Saxon Gate East | Milton Keynes | MK9 3EJ

Web: [www.milton-keynes.gov.uk/planning-and-building](http://www.milton-keynes.gov.uk/planning-and-building)



### Stop the Arc Campaign

Many of you will be aware that the future of the Ox-Cam Arc proposals has been thrown into doubt following the appointment in September last year of Michael Gove as the new Secretary of State for Levelling Up, Housing and Communities. A scheduled meeting last December between Mr Gove's Ministry and Local Authorities was cancelled at short notice, leaving all Local Councils across the Arc 'in limbo' over the future of Government plans for it. Earlier this year, in response to a question from a fellow MP, Mr Gove indicated by a gesture that the Ox-Cam Arc has been 'flushed away'.

Mr Gove's mimicking skills are no substitute for an official announcement from the Government; an announcement which is now many months overdue. Why do we have to wait so long to hear about the future of the Arc that will affect its 3.7 million residents? What will our Local Councils do about the housing targets in present and future Local Plans that have been over-inflated in the expectation of the Arc going ahead? Will they be allowed to reconsider these targets, or will high growth ambitions be forced through by compliant Councils lobbied by the property development sector?

We have a chance, very soon, to try to get the Government to make its plans for the Ox-Cam Arc's future very much clearer. For this, we need your help please.....

### **URGENT ACTION**

On Monday 13th June, Mr Gove and the Housing Minister, Stuart Andrew, are answering questions from the Levelling Up, Housing and Communities (LUHC) Select Committee in Parliament. The committee intends to focus on Levelling Up and cladding, but if a lot of people write as soon as possible to committee members about the Arc, we should be able get this topic onto their agenda as well.

So we are asking you now to write to (or tweet) one of the following MPs on the committee:

Clive Betts MP (Labour, Sheffield SE), Committee Chair-man, email:

[officeofclivebettsmp@parliament.uk](mailto:officeofclivebettsmp@parliament.uk)

Bob Blackman MP (Conservative, Harrow East), defacto Vice Chair-man, email:

[bob.blackman.mp@parliament.uk](mailto:bob.blackman.mp@parliament.uk) Twitter @BobBlackman

Ben Everitt Arc MP (Conservative, Milton Keynes North), email: [Ben.Everitt.mp@parliament.uk](mailto:Ben.Everitt.mp@parliament.uk)

Twitter @Ben\_Everitt

Andrew Lewer Arc MP (Conservative, Northampton South), email:

[Andrew.Lewer.mp@parliament.uk](mailto:Andrew.Lewer.mp@parliament.uk) Twitter @ALewerMBE

Mohammad Yasin Arc MP (Labour, Bedford), email: [Mohammad.Yasin.mp@parliament.uk](mailto:Mohammad.Yasin.mp@parliament.uk)

Twitter @yasinforbedford

You can also email the whole committee on [luhccom@parliament.uk](mailto:luhccom@parliament.uk) or tweet them @commonsLUHC

### **OTHER NEWS**

1. In other news, Stop the Arc achieved, or contributed to, the removal of two more Arc Leaders at the local elections on 5 May. We are very grateful to all those who helped, particularly to those who distributed our leaflets:

- Ryan Fuller failed to be re-elected as Leader of Huntingdonshire District Council and his party lost control of the Council
- Michelle Mead was removed as Leader of West Oxfordshire District Council because her party lost control to an opposition coalition
- Barry Wood (also chair of the Arc Leadership Group, ALG) nearly lost his seat in Cherwell and his party's majority was significantly reduced (in total, far more people voted against than for Cllr Wood, but the opposition vote was split three-ways). Cherwell is now the only Conservative-controlled council in Oxfordshire.

2. Several recent Freedom of Information (FOI) requests have revealed the proceedings of Arc Leadership Group (ALG) meetings that included statements acknowledging the public's concerns about high housing growth levels. The ALG decided that:

"If we can stop using words like 'growth' and 'sustainable' and start talking about things like 'doubling nature' and the 'green arc' we might start getting over this huge hurdle of public acceptance of the Arc."

Stop the Arc has talked for a very long time about the danger of 'greenwashing' the Arc. Putting lipstick on a pig doesn't persuade anybody that it's really not a pig!

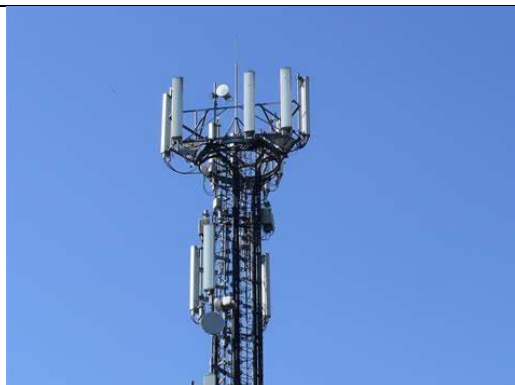
3. The formal approval for the East-West Rail section from Bedford to Cambridge has been further delayed significantly, to beyond the next General Election.

4. We are still waiting to hear the results of the first official Arc Spatial Framework consultation that ended in October last year. The FOI documents referred to above reveal that the Arc Leadership Group saw the analysed results of this survey in January of this year. Why is it taking the Government so long to make the results public? Other News reports suggest that Government has now abandoned its Arc Spatial Framework approach. Again, why has no official announcement been made about this? Did we all waste our time filling in the official Government consultation?

5. Due to the lack of Government interest in the Arc, the Arc Leadership Group is now developing an 'Arc Internationalisation Plan' with the Department for International Trade. But foreign investors in the Arc will not provide the infrastructure that all Arc documents claim is essential for Arc development. We might end up with yet more growth and no supporting infrastructure. Will the Arc Leadership Group specifically avoid seeking foreign investments from countries with dreadful human rights records and recognised by our own Security Services as a threat to our national security? Cambridge City Council is only now reconsidering its previous policy of allowing sales to overseas buyers of up to 25% of houses built on public land. Property developers are still offering for sale Arc houses priced in a variety of foreign currencies. Housing numbers should be based on local need, not developer greed.

6. The unpublished minutes of the Arc Leadership' Group secret meetings, and other papers obtained under FOI, will be made available on our website.

7. We are currently studying the latest Levelling Up Bill, which includes a great deal of new legislation on Planning. One of its provisions would allow the Government to impose a Spatial Strategy across the Arc or similar area with any right of public consultation specifically excluded. Such top-down Government would override any Local Plans. So much for local democracy or giving a voice to people affected by developments.



Walton

**PRE-CONSULTATION ENQUIRY IN RESPECT OF APPLICATION FOR PROPOSED 5G (FIFTH GENERATION) TELECOMMUNICATIONS EQUIPMENT:**

**MIK21976 - Proposed 15 m Streetworks At Britten Grove, Milton Keynes, Buckinghamshire, MK7 8PX.**

On behalf of our client, GBC ('client'), who have been selected by CK Hutchison Networks (UK) Ltd to provide the resilient national telecommunications apparatus associated with 5G, Dot Surveying ('agent') is instructed to prepare and submit applications for a proposed mast and associated ancillary equipment.

This pre-consultation enquiry relates to the proposed development located at the site at At Britten Grove, Bow Brickhill, Milton Keynes, Buckinghamshire, MK7 8PX.

Following recent survey work, an option has been identified to extend connectivity at the above location, offering the potential to enable planning for 5G implementation.

The Government recognises that the widespread coverage of mobile connectivity is essential for people and businesses. As well as improved mobile signal, 5G networks are also crucial to drive productivity and growth. Enabling and planning for 5G implementation is central to achieving the Government's objective to deliver prosperity at the local level and enable places to share in the proceeds of growth.

The significant impact of the coronavirus pandemic demonstrates the urgent need for the next generation of mobile connectivity to allow people to work and learn from home.

Prior to the submission of either a full planning application or an application for prior notification of proposed development by telecommunications code systems operators, as a stakeholder, we seek and welcome your comments and views on the proposal as per the attached draft planning drawings and site detail sheet.

We look forward to receiving any comments on the preferred location identified within 14 days of this email.

If you require any further information relating to the contents of this email please make contact with Mr James Reilly by email to [j.reilly@dotsurveying.co.uk](mailto:j.reilly@dotsurveying.co.uk) or telephone 07903895601. Or [planning@dotsurveying.co.uk](mailto:planning@dotsurveying.co.uk)

Simon Siddique - Dot Surveying Ltd  
T: 0345 340 5456 (Option 5)



**Mental health is the number one reason for work related illness in the UK and is on the rise.**

Statistics published by the Health and Safety Executive (HSE), covering the 2020/21 period, show of the 1.7 million workers suffering from a work-related illness, 800,000 were stress, depression or anxiety.

Even before the pandemic took hold, it was estimated that mental health issues cost UK employers up to £45 billion a year.

Whether you're a small business or a large corporation, the law requires all employers to prevent work related stress to promote, support and sustain good mental health in the workplace.

The Working Minds campaign brings together a range of tools and support to help businesses and workers understand the best ways to prevent work related stress and encourage good mental health.

For more information on the Working Minds campaign or to see how you can get involved, check out the link here. <https://workright.campaign.gov.uk/workingminds/>

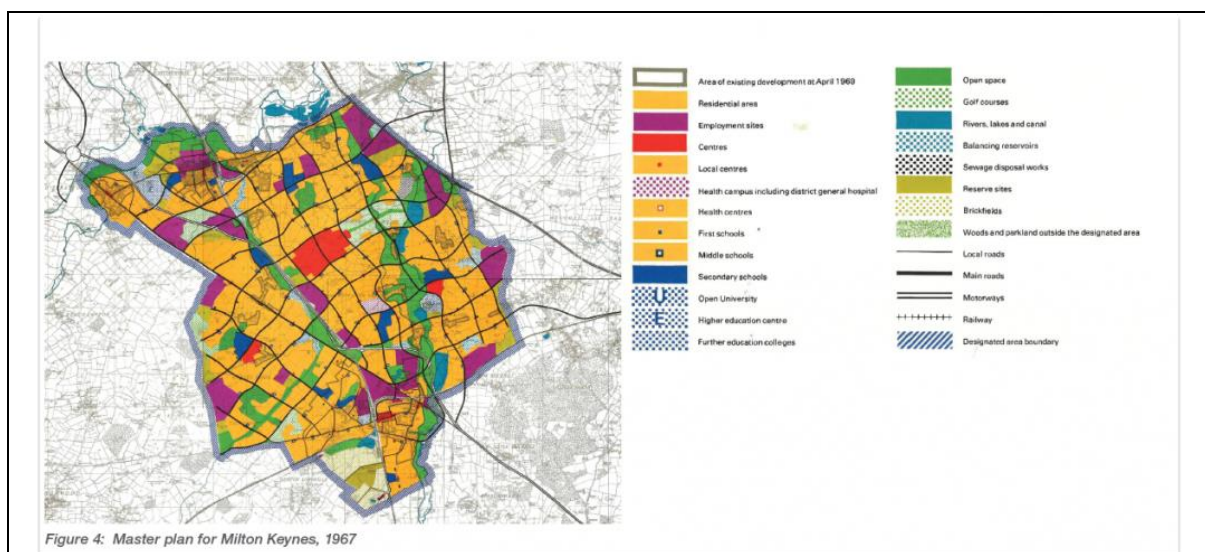
#### DELEGATED DECISIONS: 2022 – Decisions coming up by the Cabinet at MK Council ...

Subject of Decision & Date of Meeting	Decision Detail	Attendees
<b>Wheeled Bin Procurement and Storage Cabinet</b>  <b>7<sup>th</sup> June (6.30 pm)</b>	<b>To consider approving the updated position of the Wheeled Bin and Waste receptables procurement and budget management.</b>	<b>Councillor Middleton (Cabinet member for Resources) on behalf of Councillor Townsend (Cabinet member for Public Realm) Officer Report and Annexes None</b> <b>Stuart Proffitt Director - Environment and Property</b> <b>Nick Hannon Head Environment and Waste Tel: 01908 252577</b>

#### DELEGATED DECISIONS

Subject of Decision		Sponsoring Officer and Report Author
19 <sup>th</sup> July	Re-Procurement of the Highways, Street Lighting and Network Infrastructure Contract	Officer Report None

	To consider a review and re-procurement exercise of the Highways Term Service Contract and design element of the Highways service. Delegated Decision Councillor Townsend (Cabinet member for Public Realm)	Stuart Proffitt Director - Environment and Property Graham Cox Interim Head of Highways Tel: 07957 699621
19 <sup>th</sup> July 2022	Parking Surplus 2021/22 To consider how the parking income surplus generated in 2021/22 is spent. Delegated Decision Councillor Townsend (Cabinet member for Public Realm)	Officer Report None Stuart Proffitt Director - Environment and Property Graham Cox Interim Head of Highways Tel: 07957 699621



**Planning - Team Manager**

**07775 110809 Chris Nash**

**Development Management Manager**

**East Team**

**07795 475593  
07795 475584  
07920 146474  
07795 475586  
07795 475595  
07775 111052  
07554 338790  
07775 111178  
01908 254773  
07385 469591  
07385 469645**

**Paul Keen  
Katy Lycett  
Robert Bridgen  
Lakeisha Peacock  
Charlotte Ashby  
Tamlin Barton  
Rachel Larner  
Sonia James  
Helen Pinder  
Chloe Rawlings  
Yvonne Apawu**

**Team Leader  
Principal Planning Officer  
Principal Planning Officer  
Senior Planning Officer  
Senior Planning Officer  
Planning Officer  
Planning Officer  
Planning Officer  
Development Services Officer  
Development Services Officer  
Development Services Officer**

**West Team**

07384 241816	Elizabeth Verdegem	Team Leader
07909 681807	Sarah Willetts	Principal Planning Officer
07880 398388	Gavin Forrest	Senior Planning Officer
07795 475588	Ida Gahnstroem	Senior Planning Officer
07552 765580	Lucy Baxter	Planning Officer
07552 754817	Emily Kingswell	Planning Officer
07384 241817	Lauren Hitchings	Planning Officer
07867 894620	Kayleigh Boulding	Development Services Officer
07775 111209	Paul Kitchener	Development Services Officer
07920 146501	Pinder Rathor	Development Services Officer
<b>Enforcement Team</b>		
07795 475597	Victoria Barrett	Team Leader
07795 475589	Zehn Sajid	Enforcement Officer
07775 110877	Tom Halsey	Enforcement Officer
07922 076685	Angela May	Development Services Officer

Planning applications	Weekly list 1 June 2022
<b>Planning buddy!</b> Rachel Larner Planning Officer <a href="mailto:rachel.larner@milton-keynes.gov.uk">rachel.larner@milton-keynes.gov.uk</a> 07554 338790	<ul style="list-style-type: none"> <li>• Bow Brickhill Parish Council</li> <li>• Little Brickhill Parish Council</li> </ul>
<b>Planning Buddy!</b> Sonia James Planning Officer <a href="mailto:sonia.james@milton-keynes.gov.uk">sonia.james@milton-keynes.gov.uk</a> 07775 111178	<ul style="list-style-type: none"> <li>• Walton Community Council</li> </ul>
<b>Planning Buddy!</b> Senior Planning Officer <a href="mailto:charlotte.ashby@milton-keynes.gov.uk">charlotte.ashby@milton-keynes.gov.uk</a> 07795 475595	<ul style="list-style-type: none"> <li>• Wavendon Parish Council</li> </ul>
<b>Planning Buddy</b> Katy Lycett Principal Planning Officer <a href="mailto:katy.lycett@milton-keynes.gov.uk">katy.lycett@milton-keynes.gov.uk</a> 07795 475584	<ul style="list-style-type: none"> <li>• Woburn Sands Town Council</li> </ul>
<b>Planning Applications</b>	
22/01287/FUL Type: Full Application	<ul style="list-style-type: none"> <li>• Little Brickhill Parish Council</li> </ul>



<p>Erection of two detached dwellings with associated garages/carports, a 3-bay detached carport with loft storage and external stairs associated with Willow House, and alterations and extension of the existing access drive. Willow House, Watling Street, Little Brickhill, Milton Keynes, MK17 9LS - Mr J Dearman East Planning Officer: Charlotte Ashby Responses by 24.06.2022</p>	
<p>22/01299/DISCON Type: Discharge of Conditions Approval of details required by condition 18 (Management and Maintenance Plan for Artificial Grass Pitch) of permission ref. 22/00164/FULMMA Land At Glebe Farm, South of A421 And North of Lower End Road, Wavendon, Milton Keynes Milton Keynes Council - Education Department East Planning Officer: Lakeisha Peacock Responses by 10.06.2022</p>	<ul style="list-style-type: none"> <li>• Wavendon Parish Council</li> </ul>
<p>22/01315/CONS Type: Consultations from Adjoining Authorities Outline Application: development for up to 5,000 new homes specialist residential accommodation, up to 30ha of employment land, retail, community, open spaces, leisure and sport uses, hotel uses, four lower schools, two middle schools, one upper school, woodland planting, waterbodies and waterway links, ecological areas, accesses, cycle, and pedestrian routes, supporting infrastructure, ground remodelling, landscaping and demolition works. Land Between Brogborough, Lidlington and Marston Moretaine, Central Bedfordshire Central Bedfordshire Council East Planning Officer: Robert Brigden Responses by 17.06.2022</p>	<ul style="list-style-type: none"> <li>• Wavendon Parish Council</li> </ul>
<p>22/01233/HOU Type: Householder Application Erection of a two-storey rear extension 20 Weathercock Lane, Woburn Sands, Milton Keynes, MK17 8NT, Mr George Balac-Quinn East Planning Officer: Sonia James Responses by 20.06.2022</p>	<ul style="list-style-type: none"> <li>• Woburn Sands Town Council</li> </ul>
<p>22/00927/FUL Type: Full Application Installation of 5m lighting columns to car park The Stables, Stockwell Lane, Wavendon, Milton Keynes, MK17 8LU Ms M Ferguson East Planning Officer: Charlotte Ashby Responses by 06.07.2022</p>	<ul style="list-style-type: none"> <li>• Wavendon Parish Council</li> </ul>



### Where and when to put your bins out

- Place waste and recycling on the boundary of your property closest to where the collection vehicle passes by 7am on your collection day. Don't put out your recycling earlier than 5pm the day before your collection day.
- Don't pile up your bags with the neighbours in your street.
- Tie up all rubbish and recycling bags.
- Rinse out any food and drink containers before you put them into the clear sacks.
- Breakdown cardboard and place it inside the clear recycling sack. If is too big please take to your local Household Waste Recycling Centre.
- Don't put loose items, e.g. large cardboard boxes out with your recycling; it won't be collected.
- If your recycling bags, box or wheeled bin contain the wrong items it may not be collected or emptied.

If you think your rubbish has been missed by Serco please use the councils missed bin reporting form. <https://www.milton-keynes.gov.uk/waste-recycling/report-or-request-it/report-a-missed-collection>

<https://www.milton-keynes.gov.uk/waste-recycling>



Locally - PC Rob Childs – 07974 970568 or [robin.childs@thamesvalley.pnn.polic.uk](mailto:robin.childs@thamesvalley.pnn.polic.uk) -----



## **We need to talk about parking**

We've all been there, when you can't get into the last space because of someone's poor parking, or the pavement isn't big enough for a pushchair or a wheelchair to get through because someone's parked outside the takeaway to pick up their order.

Frustrating? Yes.

Illegal? Not necessarily...

We receive over 15,000 calls each year related to parking but a huge 60% of these are not matters for the police. In fact, in most areas of the Thames Valley, illegal parking is enforced by the local councils.

So, do you know when parking is illegal and when it's just inconsiderate?

Parking should be reported to police when a vehicle is parked:

- on zig zag lines or a pedestrian crossing,
- in a way that would prevent emergency vehicles from access,
- dangerously.

Parking is illegal and should be reported to your local council when a vehicle is parked:

- opposite or within ten metres of a junction,
- over a dropped kerb,
- in spaces reserved for Blue Badge holders, residents or motorbikes (unless entitled to do so),
- in marked taxi bays, cycle lanes or red lines,
- near a school entrance, bus or tram stop,
- on double yellow lines.

If the parking does not fall within those parameters, then it is classed as inconsiderate and is a civil matter and is for you to arrange with neighbours or your management company, or failing that, speak to your local council.

If a vehicle is parked on the kerb, these incidents are dealt with on a case by case basis. On some streets, parking on the kerb is unavoidable and so neither the police nor the council would intervene. In some cases, parking on the kerb could restrict access for those who are vulnerable or who have disabilities and so we would attend.

If someone parks on your driveway without your permission, this is trespassing and is a civil dispute so does not need to be reported to the police or the council. If a polite word with the

driver does not resolve the situation, you may wish to seek advice from Citizen's Advice or a solicitor.

If a parking space is available on a public road, even if it's directly outside your house, anyone is allowed to park there. This can be frustrating, especially if spaces are hard to come by on your street, but it is not a matter for the police or the council.

Take a look at our Think Before You Dial page <https://www.thamesvalley.police.uk/police-forces/thames-valley-police/areas/c/2019/think-before-you-dial/> for more information on the best way to get in touch with the police.



### Community Speedwatch scheme

The Community Speedwatch scheme is set to provide communities with equipment and training to monitor speeding in their area.

Thanks to a new partnership with Community Speedwatch UK, a not-for-profit social enterprise that provides support for speedwatch schemes, Thames Valley have taken a major step forward in the fight to improve road safety.

Organised by the Office of the Police & Crime Commissioner, speedwatch groups will be provided with a starter kit on a loan basis, including a speed detection device, to help volunteers to assist in the battle against speeding motorists.

Before community teams can be deployed to the roadside, they will undergo a number of training sessions online. Risk assessments will be completed by police to ensure safety at the roadside.

The new online platform allows group-related activities to be self-regulated via an online calendar and also provides vehicle make recognition training. DVLA pre-checks logged registration numbers for authenticity before automatically passing data on to the police for further processing. Existing Community Speedwatch groups will be contact directly about restarting activity once coronavirus restrictions allow.

A six-month trial will take place in pre-selected locations in order to test the new online platform and get feedback from volunteers. If successful the new scheme, including the loan of equipment will be rolled out to new and existing groups towards the end of 2021.

#### Latest news

- Restart and relaunch for Community Speedwatch in 2021
- Launch of Community Speedwatch scheme across Thames Valley

Further information

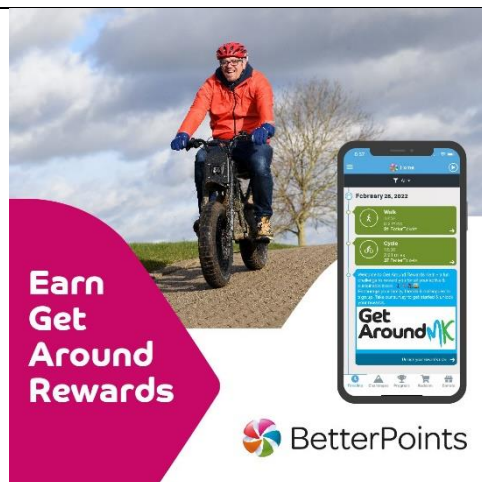
For more information, if required, please email [lee.turnham@thamesvalley.pnn.police.uk](mailto:lee.turnham@thamesvalley.pnn.police.uk).

Further information on Community Speedwatch Online can be found at:  
<https://communityspeedwatch.org/FRONT-v2-Home.php>.



The 12 Local Police areas of Thames valley Police are now on the new platform, the final area of Milton Keynes went live on 29th December 2021.

The PCC, Matt Barber has secured funding, enabling short-term loan start-up kits for new areas that are waiting for funds being available to purchase equipment. These will be available, on a loan period of up to 6 months only, once loaned you cannot request to loan again. This will enable other teams starting up in the TVP area to get started as soon as possible. These devices will be available as soon as they arrive from the suppliers



MK Council is piloting a new rewards system that could earn local people free vouchers for major retailers if they travel using green and healthy methods. Betterpoints is a national campaign which encourages people to use healthier and more sustainable ways to get around. The Betterpoints system adds points for every sustainable journey made, logging it through the Betterpoints Get Around MK App.

Participants just need to download the app, join Get Around Rewards, ensure their location is on and points will be allocated automatically. This includes walking, cycling and using the bus – as well as using MK Connect and the Enterprise Car Club.

Once enough points have been built up, users can cash these in for free vouchers at major retailers, including Currys, Ikea, John Lewis, Pizza Express and many more. Alternatively, people have the option to donate their points to local charities, including MK Snap and Medical Detection Dogs.

The campaign is now live until the end of September. More information is available at <https://getaroundrewards.betterpoints.uk/>. The Betterpoints Get Around MK app is available to download for free on Apple and Android devices.

Sign up to Get Around Rewards, make active and sustainable travel choices and start collecting Betterpoints, every month one winner will be chosen at random to win a £50 gift voucher of their choice or 50,000 Betterpoints to redeem on a variety of vouchers or donate them to charity. The council is keen for local independent businesses to take part. Any queries should be directed to [getsartertravel@milton-keynes.gov.uk](mailto:getsartertravel@milton-keynes.gov.uk).

Cabinet Member for Climate Action and Sustainability, Cllr Jennifer Wilson-Marklew said: “We hope the incentive of useful retail vouchers will motivate more people to try healthy and sustainable travel options. It’s an easy way to grab some freebies from your favourite shops or donate to charity all while getting fit and doing your bit for the environment. Many people have already racked up several points and I’d encourage everyone else to do the same.”

***Cllr David Hopkins – June 2022***