

Wafas A N D Wallas

YOUR LOCAL PARISH MAGAZINE

www.wavendonparishcouncil.co.uk

September 2022

*Welcome to the Autumn 2022
edition of Wafas & Wallas.*



The Leaping Man statue (located in Wavendon) which was installed to mark the Greg Rutherford gold medal at London 2012.

Autumn 2022 Edition



Wafas & Wallas – Your Parish Newsletter Autumn 2022 Edition

Editor: David Hopkins

80 Walton Road | Wavendon | Milton Keynes | MK17 8LW

For any local issues contact me at: David.hopkins@milton-keynes.gov.uk

Wavendon on the Web: www.wavendonparishcouncil.co.uk

Wafas AND
Wallas

Printed & Published by
Wavendon Parish Council on
behalf of the people of the
ancient Parish of Wavendon
(including parts of
Hog Sty End)

Village Contacts

Wavendon Parish Council

Cllr David Hopkins (*Chairman*)

Cllr Arthur Braddish

Cllr John Goss

Cllr Robert Hill (*Vice Chairman*)

Cllr Ron Jamieson

Cllr Marlese Levermore

Cllr Jill Wilkinson

**Copy Date
for December**
(the Winter 2022) edition:
Sunday 6 November

Wavendon Parish Council

For any issues that you would like to raise with Wavendon Parish Council please contact, in the first instance, Parish Clerk - **Alan Kemp**

Wavendon Parish Council Clerk
clerk@wavendonparishcouncil.co.uk

Address

57 West End, Long Whatton,
Loughborough, Leicestershire, LE12 5DW.

Phone Contact

HOME 01509 844241

MOBILE 07783 939020



WOBURN SANDS COMMUNITY MARKET DATES

Woburn Sands very own Community Market is held on the **second Saturday of the month from 10am - 2pm**, at the Memorial Green on the High Street.
(*look out for signs confirming market days during the pandemic).

This is a market for locally produced food and crafts and is run by volunteers and some local Councillors.

Looking to hire the Wavendon Community Centre?



Contact **Susan Hopkins** Hall Manager:

T: **07512 685198**

E: sueanne.hopkins@gmail.com

Wafas & Wallas is produced by

bespokemedia
design - print - distribution

t 01234 720105 m 07879 403 538

www.bespokemedia.org

Reporting Issues to *Milton Keynes Council*

Issues that need to be reported to Milton Keynes Council can be done via the link noted below. This covers reporting items such as street lamps, waste and recycling, missed collections, defect on roads/potholes etc.



www.milton-keynes.gov.uk/pay-report-apply/report-it

From the Chairman of the Parish Council

EAST WEST RAIL

Key figures from business, engineering and local politics have come out in support of the under-fire East West Rail project as its future hangs in the balance.

An MP, an infrastructure body and a local enterprise partnership are among those to tell NCE the controversial Oxford-to-Cambridge line should be completed by the incoming government.

However, serious doubts have emerged over the latter stages of East West Rail after the Cabinet Office's Infrastructure and Projects Authority said the objectives appear unachievable and transport secretary Grant Shapps admitted he would like to scrap the project east of Bletchley during an interview on LBC radio.



Wavendon Heights community centre is almost ready to open to the public




THE NEW WAVENDON HUB PAVILION

The Parish Council took delivery of the keys to the new building in July from the Director of Community Services at MK Council (Sarah Gonzales). We now have a period of fitting out of the building which we anticipate being ready for hire in the late autumn.

The playing fields will be ready for use in September 2023 as in the interim residents are asked not to access the fields whilst the grass and the associated planting takes hold. The very dry conditions have been allowing the planting to establish very challenging and many thanks to the contractors and village residents who have taken on the tasks of watering the literally hundreds of plants and saplings that have been planted.

Information from your Parish Council, go to:
www.wavendonparishcouncil.co.uk/




MKC / Serco Waste Collection Keeping it Moving

Please park considerately, especially on waste collection days to ensure that the refuse vehicles can get through to collect your waste. These vehicles need space to manoeuvre and safely negotiate parked vehicles. Avoid parking in hatched areas, junctions, entrances to streets and designated turning bays.

Do ensure that waste is clearly visible on the night/morning of collection by 7am unless specified in "extreme weather events". Collection is usually between 7am-5pm.

Should a refuse vehicle not be able to gain access then the crew will photograph and log it. A second attempt will be made to collect waste within 2 working days and waste should be left out for collection. Unfortunately if this is not successful, waste will need to be brought back in and presented the following week.

Find out more about waste and recycling here
www.milton-keynes.gov.uk/recycling



SEEKING VOLUNTEER DRIVERS!

BucksVision volunteers organise social activities for people with sight loss living in and around Milton Keynes, who can be very lonely without our help.

We need car drivers to join our friendly team, to drive people to and from our weekday activities. If you have a full driving licence and can offer a few hours, fortnightly or monthly, please get in touch.

No experience needed, full training and expenses paid. It's rewarding and fulfilling, and an ideal opportunity to make a real difference and new friends!

Call 01296 487 556
volunteering@bucksvision.co.uk
www.bucksvision.co.uk





Family and Friends Carers - Kinship

Do you look after a grandchild, niece, nephew, cousin, or a friend's child because they cannot live with the birth parents? Then you are a Kinship Carer. Come and chat with other Kinship carers who know what it's like. This is open for ALL Kinship Carers

No booking required just pop in.

We meet 1st 2nd 4th & 5th Thursday every month (Term Time) 9.30a.m until 11.30a.m in the Community Room in Morrisons @ the Westcroft District Centre. 4 Barnsdale Dr, MK4 4DD

The 3rd Thursday each month is an evening Zoom meeting.

For details on joining these meetings and any information about the group or about Kinship please contact Karon

Email; kinshipmk@outlook.com or grandparent.sg@ntlworld.com

"The people I met were so lovely & made me feel very welcome." "It's great to meet other people in the same situation." "I think the group is great." "Finding the group made me feel stronger in being able to cope." "I don't feel so isolated." "Makes me feel as if I have some support."



Visit Woburn Sands High Street between 10th and 25th September and you will be in for an extra special treat as launching to coincide with the September Community Market will be an art exhibition from a selection of fantastic local artists displayed in many of the shop windows along the High Street.

The trail is being organised by 2 very local artists Carmen Hardy and Myra Hutton and we hope to bring an extra colourful buzz to the High street.

Most artwork will be for sale direct from the artists, artwork will be displayed in shop windows and also inside some shop spaces.

Those of you who have watched Channel 4's Pottery Throwdown will have seen WS ceramicist Peter White reach the finals, he will be one of the artists taking part with his pottery and we'll have a stunning and varied mix of work from paintings, textiles, printmaking, glass, mosaic, digital art etc so pop the dates in the diary and come along to enjoy a feast for the eyes.

We are very grateful for the support from local businesses from the Shop owners taking part, the Community Market organiser and editors of various local publications including this one that are helping us spread the word, the Print Cellar and Woburn Sands Town Council for all their help.



Time to spare?

Are you looking for something new to do?

If so, and you are over 21, be part of the Rotary Club of Woburn Sands & District, where a friendly welcome awaits.

We meet at The Moore Place Hotel, West Hill, Aspley Guise, Milton Keynes MK17 8DW on the 1st & 3rd Thursday of the month at 7.00pm.

Rotary creates new friendships and opportunities to help others whilst having fun. Willen Hospice, Ride High, Night Shelter and others have benefited from our fundraising efforts so far.

So why not come along and meet us...

EVERYONE IS WELCOME

Bring along your partner or a friend

Need further information?

Anne - Tel. 07339 406766 Email - woburnsandsrotary@gmail.com

Keep up to date by following our page on Facebook: Woburn Sands Art Trail

Or contact myra@myrahutton.co.uk

or carmenhardyart@gmail.com

The Future of East West Rail

Transport Secretary Grant Shapps has cast doubt on the second and third phases of East West Rail, saying that cutting them “would save £3-5 billion straightaway”.

Grant Shapps was talking to LBC presenter Iain Dale on July 11, the day before withdrawing from the contest to replace Boris Johnson as Conservative leader.

In the interview, Grant Shapps proposed a “fiscal star chamber” that would consider all proposed government spending as a potential route to saving money and gave the Bletchley-Bedford and Bedford-Cambridge sections of EWR as examples of where cuts could be made. That would leave EWR with just the Oxford-Bletchley/Milton Keynes services being delivered as part of the first stage.

In addition, readers might like to know that the Government’s Infrastructure and Projects Authority has recently released its latest Annual Report.



The IPA has classified Stages 2 (Bedford – MK) and 3 (Bedford-Cambridge) as Red on its “traffic light” system. A Red categorisation suggests that the project is unachievable.

The Report states “There are major issues with project definition, schedule, budget, quality and/or benefits, which do not appear to be manageable or resolvable”

EWR have commented “Developing the project is an iterative process and we will continue to keep the business case and delivery programme under review”



RIDE+STRIDES
for Churches
Join us!

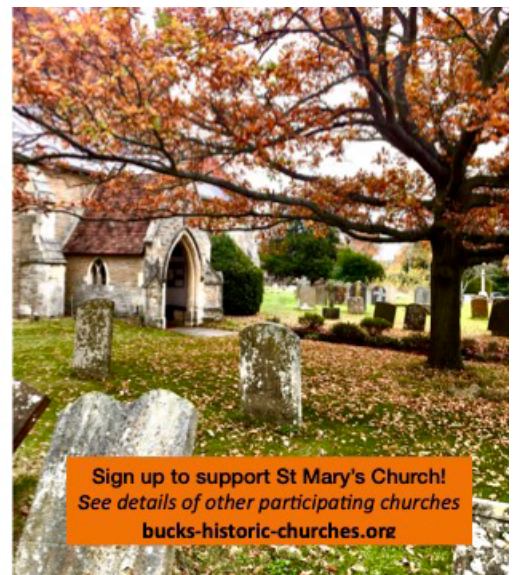
Ride & Stride!

Helping to raise funds for the Bucks Historic Churches Trust

Saturday 10th September

This year’s sponsored **Ride & Stride** in aid of Bucks Historic Churches Trust will take place on Saturday 10th September. It’s a chance to enjoy walking, riding or cycling around our beautiful local churches while raising money for a good cause.

Half the money goes directly to our parish church and the other half goes to BHCT (from which our parish church benefits indirectly). You can visit as many or as few churches as you like. If you are not walking or cycling, you can still contribute by sponsoring those who are doing so, or by doing a stint as a church sitter at St. Mary’s. The weather is usually kind to us, so please put the date in your diary and look out for more details on our website www.stmaryswavendon.co.uk or Facebook page **St Mary’s Church Wavendon Village**



Sign up to support St Mary's Church!
See details of other participating churches
bucks-historic-churches.org



Wheeled Bins for MK in 2023

The current waste collection contract ends next year. This provides MK Council an opportunity to do things differently and to support the new roll out of wheeled bins for residents.

The new waste collection service goes live in Autumn 2023. Production of the new bins starts in summer 2022, with over 300,000 bins being delivered to households across the city during summer 2023.

We are tackling the climate change emergency. Currently the Council collects 8.5 million recycling sacks and 21 million black sacks of rubbish each year. This is not good for the environment.

Wheeled bins will make a positive difference;

Cleaner - less spillage from sacks on streets

Greener - more recycling and better quality with the separation of waste

Safer - less injuries for residents and staff

Each property that is suitable to have wheeled bins will receive:

Dark grey bin - weekly collection for rubbish that cannot be recycled.

Green bin - weekly collection for food and garden waste.

Red lidded bin - for paper and card collected fortnightly.

Blue lidded bin - for glass, plastic, aerosols and cans collected fortnightly.

We have been running a pilot on the use of wheeled bins across almost 3,000 properties since 2020. Evidence from these areas shows us that streets do remain cleaner. This is because rubbish is contained within bins. A multi-national public services provider reported that 45% of on-street litter was found to be caused by recycling boxes and sacks.



There is a positive impact on areas that may have a pest problem. Food sources are removed because it is contained within the wheeled bin.

We know that having wheeled bins has led to higher rates of recycling for residents.

There have been no reported injuries to the waste collection crew in the pilot area since moving to bins.

MK has committed to being cleaner, greener and safer. Moving to wheeled bins, helps to fulfil these aims.

How to find out more

We will soon be publicising details of local events where we will be taking 'Bins on Tour'. You will have the opportunity to see the bins and talk to waste experts to answer any questions you may have. Details of these sessions will be shared on the Council website and publicised locally.

The Council website is being regularly updated and includes a helpful FAQ section -

<https://www.milton-keynes.gov.uk/wheeled-bins>

Some information displays will be set up in libraries for you to find more information.

Email - **customerservices@milton-keynes.gov.uk**

Customer Services - Telephone: **01908 252592**

The annual canvass is in progress!

The Electoral Commission



The 2022 Annual Canvass

The Annual Canvass of the electoral register commenced in July. MK council will be sending out forms to households from the end of July. Please ensure you check the forms and respond where required as soon as you can. Canvassers may telephone or call at your property where no response has been received if required from September till October.

What is the Annual Canvass of the Electoral Register?

Emails and canvass forms are sent to every household giving details of what information is currently held on the Electoral Register at that property. Occupiers are required to check the information and confirm that it is correct or make any changes that are necessary so that a revised register can be published on 1 December. Different forms are sent to all residential properties during the canvass, please check the form carefully and respond as soon as you can only if it requires you to do so.

When Responding

If the information is correct, please confirm this by:

- Visiting www.householdresponse.com/miltonkeynes OR
- Call **0800 197 9871** OR
- Text **80212**

And entering part 1 and part 2 of the security code which is on the form.

If the information is wrong and you need to make changes (including adding and deleting people) you can also visit www.householdresponse.com/miltonkeynes and enter parts 1 and 2 of the security code. Each new person will also have to register individually at www.gov.uk/register-to-vote .

Please respond as soon as possible so your details can be updated.

MK COUNCIL IS WORKING WITH WOMEN LEADERS UK TO HELP MK BUSINESSES CREATE MORE INCLUSIVE WORKPLACES.

Through their new 'Allyship' scheme, Women Leaders will work directly with MK businesses to encourage greater gender equality in the workplace.

By working together, the scheme is also helping Women Leaders continue to deliver their career-connect programme, offering one-to-one mentoring sessions for people in Milton Keynes struggling to get back into work.

It's open to all businesses in MK, to find out more or how your organisation can get involved, click <https://womenleadersuk.org/allyship/>



WOMEN LEADERS



Do you want a Greener Business?

Milton Keynes Council has partnered with Ngage Solutions to support more than 150 businesses with the understanding, knowledge and resources to become greener and more sustainable through their PRISM scheme.

Ngage will use its expertise and knowledge to engage, advise as well as signpost businesses to the support they need in various ways including:

- *Providing practical engagement live events covering how businesses may be impacted by climate change and what they can do to mitigate the impacts*
- *Providing access to alternative grant funding to the uptake of low carbon technologies and connecting businesses through community to develop and inform members on the best ways to save and grow in the sustainability space.*

Businesses who engage with the project will gain access to a specialist team that will help to demystify climate jargon, access to tools and resources that will support them to measure baseline emissions, and set actionable long-term carbon reduction targets.

For more information on how to take part, click prism@ngagesolutions.co.uk

Schools for the Future

Central Beds Plans for Woburn Sands and surrounding villages

With the Aspley Guise, Husborne Crawley, Ridgmont and Woburn Lower Schools unable to be developed into primary schools for the foreseeable future, additional teaching accommodation will be created at Fulbrook to take children from these schools into Years 5 and 6. This is from the academic year 2023/24 onwards.

Places have already been allocated to pupils for the coming academic year, 2022/23.

The building works required to expand Fulbrook are currently in the design phase and a planning application will be submitted later this summer.

Much more detail at

<https://www.schoolsforthefuture.co.uk/plans/woburn-sands/overview>



St Mary's Wavendon C of E Primary School

If you would like your child to attend our school, please see full details of our admission arrangements below.

Places are allocated in line with Milton Keynes Council admissions criteria, taking into account the class size limits of 30 pupils per class for pupils age 5, 6 or 7 at Key Stage 1.

The criteria applies to admissions of children who are:

- (a)** starting school for the first time
- (b)** transferring at 6+
- (c)** requesting admission during the year e.g. newly moved into the area

Milton Keynes Council will do everything possible to allocate a place at your preferred school. There is, however, no guarantee of a place at the school serving the area where you live.

Children moving into other Year Groups Parents of children who move into the area may apply for a place at the school by contacting Milton Keynes Council (Admissions 01908 253085). There may be vacancies in other Year Groups. If not, Milton Keynes Council will assist parents to find an alternative school in the area. If a place is offered to your child we provide a full induction programme to ensure your child settles in to St Mary's Wavendon as soon as possible.

Further information can be found here,
<https://www.milton-keynes.gov.uk/schools-and-lifelong-learning/school-admissions>

St Mary's Wavendon C of E Primary School
Wafandun Lane, Eagle Farm South
Wavendon
Milton Keynes
MK17 7AA

Tel: 01908 582182

Email: office@stmaryswavendon.milton-keynes.sch.uk



**Rebecca Marie
Academy of Dance**

At *Bubba Ballet* you can start your child's dance journey nice and early!

Come and see what were all about.
Bubba Ballet recommended ages are between 18 months and 3 years.



Every Wednesday at 10.15-10.45am
Wavendon Community Centre, MK178LH

Please contact Rebecca for more information
rebeccamarieacademy@outlook.com
www.rebeccamariemkdance.co.uk

Follow us  [BekkiBlazeyFitnessAndDance](https://www.facebook.com/BekkiBlazeyFitnessAndDance)



Wavendon Heights Community Hub Building

On Thursday, the 28 July 2022 the Chair of the Parish Council signed a 'Tenancy at Will' document that allowed the handover of the building to Wavendon Parish Council.

The MKC Director of Community Services (Sarah Gonzales) and the Chair of Wavendon Parish Council are pictured handing over the keys to the building.

This is prior to the transfer of the freehold to the Parish Council that requires more work to be undertaken by solicitors for Wavendon Parish Council and Milton Keynes Council. This will allow Wavendon Parish Council to complete the installation of Fire Extinguishers and the setting up of maintenance contracts for the Fire Alarm system / Security Systems plus many other tasks.

The Parish Council are also applying for grants to enable the purchase of capital items to try and ensure that the venue is completed ready for hiring out in the Autumn.

For any enquiries, please email: - HallManager@WavendonParishCouncil.co.uk
Mobile: - 07512 685198



Wavendon Heights Playing Fields

Unfortunately, the playing fields are NOT OPEN THE PUBLIC YET. Construction work is still taking place and the site remains unsafe for public use now.

(The Community Pavilion, Car Park & Playing Fields) is still under construction and is off limits for public access. There are open water bodies/ponds on site and these are currently under construction. The contractor and the Parish Council would appreciate if the community could be observant of the signage for "No Public Access" & "Deep Water" Signage and keep out of this area until work has been completed.

The contractor Burrows have erected the green temporary fencing surrounding the Playing fields to prevent public access and I have attached signs to reinforce "No Public Access." These signs have also been placed on all access points to the site apart from the main Gate. Some temporary "Deep Water" Signs" to accompany the "No Public Access" have been displayed.



Availability for the football pitches are anticipated to be opening for Autumn 2023.

Another issue that will effect the pitch opening date is the current lack of rainfall. Unless there is a significant weather change, the pitch surfaces almost certainly will be further delayed.

For any enquiries concerning grassroots football, please email: - JoinUs@ww-fc.co.uk





Marston Vale Line Services

Marston Vale Line Services

A full Marston Vale Line timetable resumed on Monday 16th May – an hourly service Monday – Saturday running between 05:16 & 21:32 from Bletchley and 06:10 & 22:28 from Bedford (06:04 & 22:19 on Saturdays).

The timetable can be downloaded from <https://www.marstonvalecommunityrail.org.uk/#times> Alternatively, please contact Stephen Sleight for a postal copy.

Rail tickets can be purchased from the conductor on the train. Bedfordshire Bus Pass Holders travel for half price after 10:00 on weekdays and all day on Saturday & Bank Holidays. Groups of 3 – 9 adults travel for a third off with GroupSave.

Please note there are unlikely to be any Marston Vale Line services on dates when there is RMT or ASLEF industrial action. This is currently scheduled for:

- Saturday 13th August
- Thursday 18th August
- Saturday 20th August

Please check www.nationalrail.co.uk before travel.

Bank Holiday Services

Services will be running on August Bank Holiday Monday (29th August) - Saturday timetable.

Ridgmont Station Heritage Centre

The Heritage Centre is open Wednesday to Sunday 10:00 – 4:00. The Tea Room is open at the same times. Please call 01525 287120 to book. Cyclists & walkers are welcome! Outside seating is available.

The Heritage Centre Education Programme

resumed in May (after over 2 years) as part of Community Rail Week with visits from Bedford College Foundation Students and Youth Inspired



(a Bedford charity working with young adults with learning difficulties).

School and adult groups are welcome all year by prior arrangement. Please contact Stephen Sleight for details.

Two first floor
offices are available to let
on competitive terms at the
Heritage Centre. Viewing
by appointment –

please call
01525 287121

or e-mail
heritagecentre@bedsrcc.org.uk.

Download the specifications from
<https://www.marstonvalecommunityrail.org.uk/office-and-meeting-rooms-at-ridgmont-station-heritage-centre>

Meeting room space is also available at the Heritage Centre.

Events

Saturday 3rd September

10:00am – 4:00pm
Meet Peppa Pig & George,
nature trail, rides & games,
crafts, animal encounters
and more! Free shuttle bus
from Millbrook Station

**Forest Family
Fun Day**

Visit: <https://www.marstonvale.org/Pages/Events/Category/events-whats-on>

**Saturday 10th -
Sunday 18th September**

The Marston Vale Line is the starting point for a number of walks for all abilities during the Walkir Festival including Beauty & the Beast, a new 6m circular walk from

Ridgmont Station Heritage Centre on Friday 16th September. Collect a programme from the Heritage Centre or your local library. Alternatively visit <https://www.bedswalkfest.co.uk>.



are Annual Season Passes so you can return as many times as you like for a year after your first visit. No need to book.

Friends of Aspley Guise and Bow Brickhill Stations

New Station Friends Groups have recently been formed at Aspley Guise and Bow Brickhill joining the established groups at Woburn Sands & Fenny Stratford.



As well as engaging thousands of people in volunteering, bringing people together and creating pride in station and community, Station Friends Groups play a critical role in making their stations welcoming, pleasant and attractive places. Their work extends beyond basic upkeep, incorporating community gardening and food growing and local arts & history projects. They are also the 'eyes and ears' of their local station reporting any faults and issues.

All groups would welcome some new members. Would you like to join them? A safety briefing is arranged and a high-vis jacket, identity card and duty pass are provided.

Watch our film to hear about the important role our Station Friends play at

<https://www.marstonvalecommunityrail.org.uk/get-involved/station-adoption>



Saturday 17th September -

Ridgmont Station Heritage Centre.

Take a step back into Bedfordshire's past at a special one-day Brickworks Exhibition at Ridgmont Station Heritage Centre. Free entry!

Andrew Mortlock, London Brick Archivist, will be bringing an extensive collection of archives, photographs and ephemera connected with the brickworks that used to dominate the landscape along the section of the Marston Vale Line between Bedford and Ridgmont and other areas of Bedfordshire. Andrew will also be bringing his collection of company magazines, the Phorpres News, containing records and photographs of London Brick Company workers.

Andrew and his family are steeped in London Brick with over 200 years' service dating back to both his grandfathers.



25% Discount for Marston Vale Line Passengers in Bedford!

Show your valid rail ticket and get 25% off at Gallone's Bedford & Pavilion At The Park! Gallone's is in the town centre on the Arcade & Pavilion at the Park is just a short walk away.

2 for 1 Discount for Marston Vale Line Passengers at Bletchley Park!

Show your valid rail ticket for the 2 for 1 discount. Bletchley Park tickets



For further information on any aspect of Marston Vale CRP or the Marston Vale Line please contact Stephen Sleight, MVCRP Officer, on **01234 832645**, e-mail stephens@bedsrcc.org.uk.

Visit our new website - www.marstonvalecommunityrail.org.uk

Find us on Facebook! www.facebook.com/marstonvalecrp

Follow us on Twitter! [@marstonvalecrp](https://twitter.com/marstonvalecrp)



All Set To Deliver Even Greater Participation

The start of any football season is always eagerly anticipated by everyone involved in the game. The start of the 2022/23 football season is even more exciting in Wavendon as new facilities begin to come online.

We are very grateful that Glebe Farm School is committed to Community Access of facilities, and the new floodlit artificial 3g surface will be a massive boost for Woburn and Wavendon FC teams. This is especially true for mid-week winter training. For many years our teams have had to travel to other venues at Cranfield, Leon Academy and Woughton. Now we have a facility right in the heart of our community. "We are sincerely grateful for all the time and effort Glebe Farm School have put into enabling this to happen. The School, WWFC and Wavendon Parish Council all share the vision of delivering a healthy, integrated and engaged local community. Use of facilities like the 3g pitches by local people is so important for this" commented Robert Hill, WWFC Chair.

The Club will also gain the use of a grass pitch, which will compliment facilities already in use at Wavendon Recreation Ground and St Marys Primary School at Eagle Farm. It all makes for a very exciting time for football in Wavendon, especially

with the new grass pitches at Wavendon Heights very much on the horizon too.

If you'd like to get involved with your local grassroots football club, then there are opportunities for players of all ages and abilities. The Club is one of the largest and oldest in the area, with boys' teams, girls' teams and adult teams, as well as our award winning "GoalAbility" pan disability sessions every Sunday in Wavendon.

We're also keen to hear from volunteers for a host of roles including coaching, admin and groundcare.

You can find out more on the website:-

ww-fc.co.uk

Alternatively email:-

getinvolved@ww-fc.co.uk





Glebe Farm School

Wow! We are so excited to open Glebe Farm School in September 2022. The first meeting to develop this school building was held back in March 2020 and now we are opening the doors to our first pupils and their families - what an amazing journey we've been on already with a vast committed team of professionals, including those from Wavendon Parish Council, Milton Keynes Council and Morgan Sindall, the building contractors. We send our enormous thanks to every single person that has been involved in this unique project.

The school building and its excellent facilities provide the perfect environment for our school community to flourish. We are very clear about the kind of community we are - our school values characterise and complement our vision of Ambition, Belonging, Creativity for all.



Keeping You Safe During the Heatwave

The current period of hot and dry weather we are experiencing has had a significant impact on our communities and emergency services in our area.

On 19 July 2022, Buckinghamshire Fire & Rescue Service (BFRS) declared a major incident due to the exceptional demand it faced that day. At the height of the demand, they were servicing five significant fires, as well as a number of other smaller scale incidents.

The first significant incident was at Fyfield Barrow, Milton Keynes. When the crews arrived they were faced with an intense and rapidly developing fire that was quickly spreading from sheds and fencing to adjacent properties. At the height of the incident fourteen fire engines along with two water carriers, several officers and other supporting assets were required.

The Service also started receiving calls to a fire in Wooburn Moor. Upon arrival crews were faced with a rapidly developing fire involving a barn and a commercial unit which was also affecting trees and power lines. Due to several factors, including weather conditions and high temperatures, the fire continued to spread to other buildings and vegetation. At its height fifteen appliances were required to bring the fire under control.

There were also three other significant fires that required heavy resourcing from BFRS during this period. These included a fire involving at least ten acres of standing crop, a fire involving several outbuildings and sheds, and a significant fire involving a scrapyards and an adjacent workshop containing flammable gas cylinders.



BFRS would like to remind the public to take extra care during this period of hot and dry weather, and asks us all to follow or share some simple safety tips:



Keep your house cool, try closing blinds or curtains.



Keep well hydrated and stay out of the midday sun.



Avoid cooling off in rivers or lakes, stick to supervised lifeguarded venues



Avoid cooling off in rivers or lakes, stick to supervised lifeguarded venues



Take extra care when using barbecues, and never put hot ashes straight into a dustbin or wheelie bin - they could melt the plastic and cause a fire.

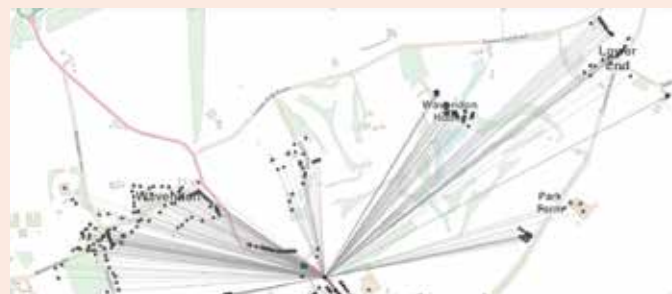
Avoid the use of bonfires or sky lanterns - the dry conditions mean fire can take hold and spread very quickly.



Councillor David Hopkins, Vice Chairman of the Fire Authority and lead for climate change said: I would like to extend my thanks to all the crews who were working in extremely hot and arduous conditions, many of whom made themselves available even when not scheduled to be on duty to ensure the Service responded to the high level of demand.

"As well as ensuring BFRS has the staff and equipment to effectively tackle the kind of incidents we have seen recently, I am also committed to ensuring the Service takes steps to reduce its own impact on climate change, to mitigate the risk of days like this one becoming more frequent in the future."

For further advice on keeping you and your family safe, please visit Buckinghamshire Fire & Rescue Service's Safety Advice Hub: bucksfire.gov.uk/safety-advice-hub/



Update on Broadband

Gigaclear are definitely covering what appears to be the whole of Wavendon village. Their local fibre cabinet, from which all services will be running across Woburn Sands and Wavendon, will be live from 16th August 2022 with deployments starting across the area shortly afterwards. Because Wavendon is about the furthest from the cabinet in Aspley Guise the deployment won't start in Wavendon until Q1 2023 and will then take about six months to complete.

MK Council has asked Gigaclear to keep us up to date with progress and Wafas & Wallas (or the Wavendon PC website <https://www.wavendonparishcouncil.co.uk/>) will let you know when we have any further information.

More at :

<https://www.gigaclear.com/home-broadband>

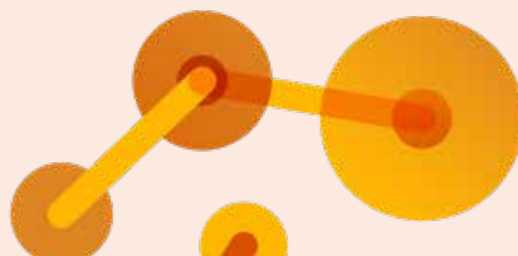
please contact our Customer Operations team on **01865 591 131**

or email at **Support@Gigaclear.com**

Or by contacting the MK Council Broadband expert, **Martyn Smith**

(Infrastructure Programme Manager - Planning Projects and Services) at

Martyn.smith@milton-keynes.gov.uk





We warmly invite you to join us at St Mary's Church - for worship on Sundays at 9.30am, for other regular events, and for special festivities, including the 'Ride & Stride' fundraiser (Sept 10th), and our Harvest and Remembrance services **All events** will appear on the website, on local social media, and on notice-boards **Revd Matt Trendall** will gladly answer your enquiries on any of our activities:
email matt.trendall.mk@gmail.com phone **01908 582839**

For online resources open to all and available at any time:
<https://www.stmaryswavendon.co.uk>

Online Exhibition

We'd love your contributions for our next virtual exhibition! View art and poetry on our current theme, and submit your own for next time. (More details on our website)

St Mary's Monthly Quiz Night **3rd Tuesday each month**

7.30pm in the church
All welcome: £1pp - teams of up to 6
Bring your own drinks & nibbles
More info on our website

Weekly Worship

Join our 9.30am Sunday Service in person (masks not currently required; we keep our policy under review). Or to worship from home, head to our website for a pre-recorded version to watch at any time

Open Door Coffee Morning **Thursdays ~ 10 am to 12 noon**

All welcome for freshly-brewed coffee or tea, our delicious home-made-cakes and a chance to meet or make friends
Every week during school term

Daily Inspiration

A fresh nugget of hope to uplift you each day

ZOOM KIDS - TUESDAYS online

Sept 13th & 27th, Oct 11th
Half Term: Oct 25th
Nov 8th & 22nd, Dec 6th & 20th
For info, and to join in, please contact Revd Matt

Your churchyard needs you! If you can spare an hour, we'd love you to join a clear-up party helping to maintain the churchyard as a place of rest. You'll meet other volunteers, and we'll provide refreshments: **Sat 27th August, 9am - 12pm** (Please see info & later dates on website)

Prayerchain For confidential support in prayer, whether urgent or ongoing, you can reach our dedicated church team by emailing us at any time on: prayerchain.wavendon@gmail.com

See our Facebook page: St Mary's Church Wavendon Village