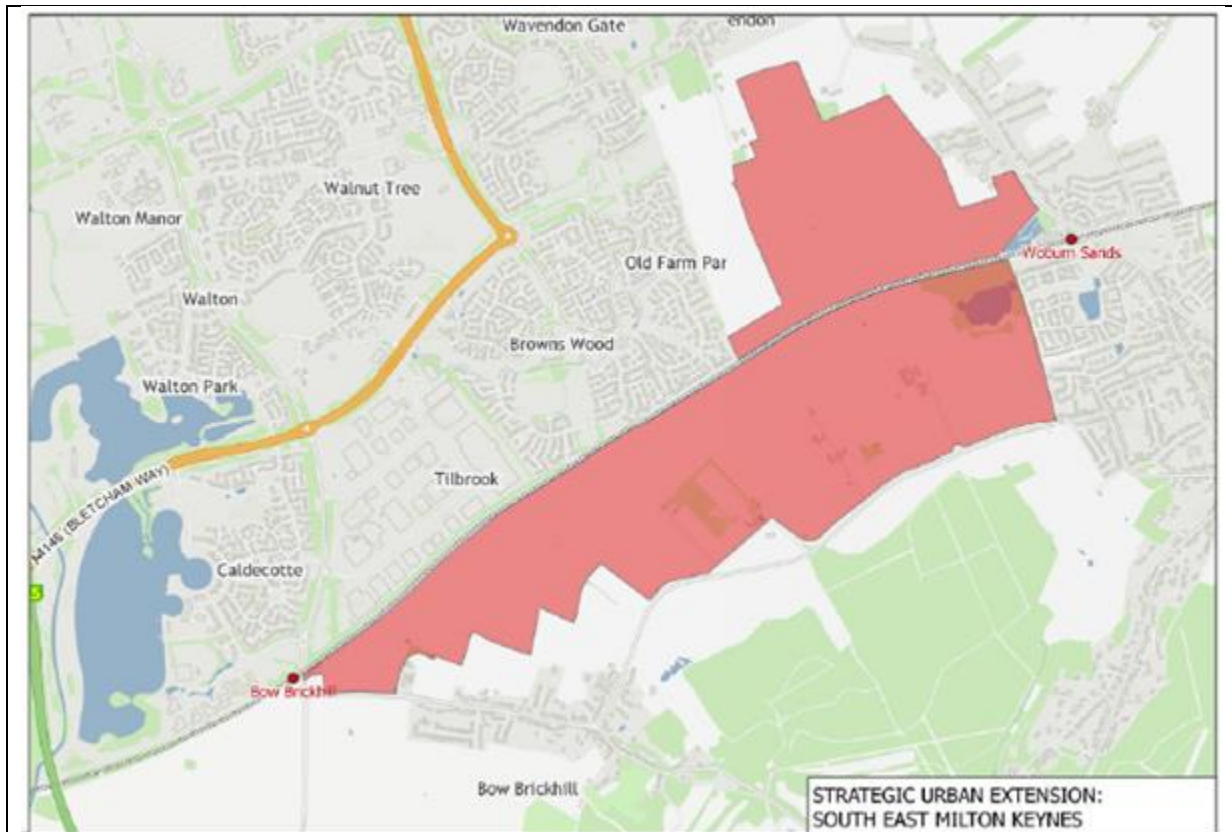


Unitary Councillor Report

(Snippets) Report from Cllr David Hopkins, Cllr Victoria Hopkins & Cllr Alice Jenkins – Representing Wavendon at MK Council

January 2019



South East Milton Keynes Strategic Urban Extension (or SEMK) is a draft allocation within Plan:MK, covering an area of land approximately 210 hectares in size encompassed by Tilbrook, Browns Wood and Wavendon to the North, Woburn Sands to the East, the Green Sands Ridge to the south, and Bow Brickhill to the west.

The draft allocation within Plan:MK, under Policy SD13, allocates the land for around 3,000 homes, 7 Gypsy and Traveller pitches, and a range of social and green infrastructure provision.



The Glebe Farm Phase 2 development needs 7 new streets naming. We have enough available street names this application, but we require the Parish Council to allocate a name to each street.

The available street names are -

George
Payne
Tansley
Warren
White
Noel
Liverdy

I have attached a .PDF showing the new street layout for you to use .

If you could discuss this at your next meeting and please reply by the 25th January 2019 on how you would like us to address the streets.

T: 01908 252037

E: paul.brookin@milton-keynes.gov.uk

A421

The Central Bedfordshire Council (CBC) project to widen the A421 into dual carriageway will need two bridges to be extended: the Cranfield Road bridge, plus a footbridge near Hulcote that will safely take pedestrians, horse riders and cyclists over the wider A421 and the M1 (via four public rights of way).

January & February Weekend Closures

To prepare for these bridges to be extended, CBC need to make road closures for the safety of its workers and the public.

CBC need to close Cranfield Road bridge from 8pm on Friday 25 January 8pm, until 6am on Monday 28 January.

Then from 8pm on Friday 15 February until 6am on Monday 18 February, both the A421 (from Eagle Farm roundabout to Junction 13 of the M1) and Cranfield Road will be closed. This will allow CBC to lift and put in place three sections of the temporary bridge by crane.

CBC will try to limit any road closures to during the least busy times. And, if their contractors finish quickly, then they will re-open the roads early to minimise any inconvenience to you.

Cranfield Road Bridge Closure

To extend the permanent bridge on Cranfield Road, CBC need to close it from May 2019. The bridge is expected to be closed for up to 14 months whilst the improvements are done. CBC is working with contractors to reduce this period, if possible.

Diversions:

The M1 road will be open, or visit the CBC website for diversion details. CBC apologise for any inconvenience caused, and they thank you for your patience during the roadworks



Snippets

Community Safety

Please find attached a guide to Identifying victims of cuckooing. Following the recent Spotlight event on the subject of 'Cuckooing and County Lines', we have now released a leaflet. The wording of the leaflet is based around the acronym 'N.E.S.T' which is linked to the theme of Cuckooing. We are hoping that this will prompt people to report any concerns they may have about customers, friends, family members or neighbours so that they will be able to receive help and support. Please feel free to display in any public areas.

The next spotlight event will be in March and the subject will be Domestic Abuse – in our community, this is still in the planning process and details will follow shortly.

Emergency Planning

During the floods in May 2018 the Parish and Town Councils response was invaluable. They opened up rest and information centres which provided shelter and refreshments and also provided distribution points for sandbags.

They were able to provide information as to the areas most affected and where vulnerable people needed help. Some had pumps and other equipment and were able to assist with the distribution of sand bags.

During the weeks that followed officers of the council and the Parish & Town Councils provided further assistance by setting up more centres, visiting vulnerable people, organising temporary housing, providing assistance with clothing, clean up, waste collection and sand bags, benefits and insurance. This activity finally ending in December.

Representatives from Parish & Community Councils served on a subcommittee of the

recovery coordinating committee and were able to feed in the concerns of residents and ensure issues were tackled.

Local people had significant local knowledge about the geography of their area and also where vulnerable people may need help. In an emergency such as this flooding where there were multiple sites over a very large area the emergency services are very stretched and the importance of communities helping each other cannot be over emphasised.

Currently we have the following rest centres identified in Woburn Sands and Wavendon;

- Ellen Pettitt Memorial Hall
 - The Summerlin Centre
- And Wavendon Community Centre

Are you aware of any other locations that could be used? If so please let the emergency planning team know.

If your community were to suffer an emergency with people evacuated or needing to shelter do you have arrangements to contact relevant people at night or over a weekend to assist and open up rest and information centres?

Would you like assistance with developing or updating your emergency plan?

If you would like help, assistance or advice on any of these matters help is available from the emergency planning team who can be contacted on 01908 254555.

I hope this information will be helpful at your next meeting. If you require any further information please contact me directly.

For more information - Jane Harrison BSc (Hons) Env Health
Head of Communities, Housing & Regeneration

T: 01908 253281

E: jane.harrison@milton-keynes.gov.uk

Bus Services

Nothing to report on the bus front other than I had a very nice email from one of the regular bus users praising the service and drivers. If there is anything specific on rail services you want let me know and I can email the Transport Strategy team and ask them to reply to you direct.

For more information - Stuart Simmonds - Public Transport Technical Lead

T: 01908 252011

E: Stuart.Simmonds@milton-keynes.gov.uk



At the Parishes Forum, held just before Christmas on 13 December 2018, we dealt with one of the agenda items (Draft High Level Action Plan, Strategic Objectives in relation to devolution) by discussing in groups of 10 or so. During discussions in my own group, it became clear to me that there was a lack of understanding around the budget process and why council tax will not go down, if we (MKC as a principal authority) are doing less and parishes are taking on more!!!

I have spoken to many clerks and parish councillors over the last year or so, and the levels of understanding regarding the budgeting process and the budget itself varies greatly, so I thought it might be a good idea for me to issue the link below, which takes you to the Councils budget information. The 'front page' sums up the challenges, and makes reference to the fact that we have had to make £144million in cuts since 2011, and mentions the reductions that we have had to make in landscaping services and highway services, amongst other things.

<https://www.milton-keynes.gov.uk/your-council-and-elections/mkbudget>

The Cabinet considered the draft budget on 4 December

The budget consultation is open and the link above also details how you can make your comments and provides information about the budget road show. Consultation closes on 31 January 2019.

Following the Cabinet considering the draft budget on 4 December, a series of 2019/20 DRAFT BUDGET CHALLENGE MEETINGS (details here) take place, on

- Thursday 3 January 2019 (Room 1.02 @ 7.00PM)
- Wednesday 9 January 2019 (Room 1.02 @ 7.00PM)
- Tuesday 15 January 2019 (Room 1.02 @ 7.00PM)
- Tuesday 22 January 2019 (Room 1.02 @ 7.00PM)

The Cabinet will consider the Council Budget 2019/20 and the Medium Term Financial Plan 2019/20 – 2022/23 on Tuesday 7 February 2019

The Full Council will then make its decision on the 2019/20 Budget on Wednesday 20 February 2019.

Programme Manager – Parish and Town Councils
T: 07971 102 278

E:kay.pettit@milton-keynes.gov.uk



South Caldecotte

There has not been any progress of note since the previous meeting.

David Buckley - Senior Planning Officer (Development control) – West Team

T: 01908 25 3393

M:07775110877

E: david.buckley@milton-keynes.gov.uk

SEMK Planning Workshops

Looks like 16th and 17th January are likely dates for the SEMK design workshop involving representatives from the Parishes - and others.

Andrew Turner

Senior Planning Officer | Development Plans

Our chatbot can help with a range of planning questions why not click here to test her knowledge?

T: 01908 254892

M: 07775 110432

E: andrew.turner@milton-keynes.gov.uk

W: <https://www.milton-keynes.gov.uk/planning-and-building/>



Buckinghamshire
FIRE & RESCUE SERVICE
www.buckinghamshire.gov.uk

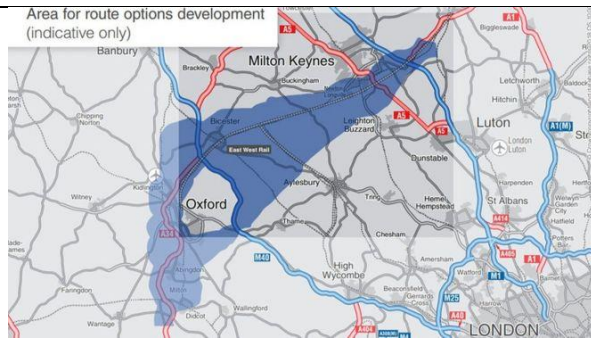
Buckinghamshire Fire & Rescue Service's recruitment campaign for firefighter apprentices is now underway.

Station Commander Dave Whitelock, of our People & Organisational Development Directorate said: "We are really excited to be launching the recruitment campaign for our next intake of operational apprenticeships, and are looking forward to receiving the applications and conducting role-related tests for those making it through the initial sift."

"The application process is being launched in December, following a really successful familiarisation day which took place in November 2018. We received a really positive response from the delegates attending, and the enthusiasm and interest they showed stands us in good stead for potential applications."

Full details of the role, the training that will be provided and the application process is available at <https://people.bucksfire.gov.uk/wholetime-firefighter/>

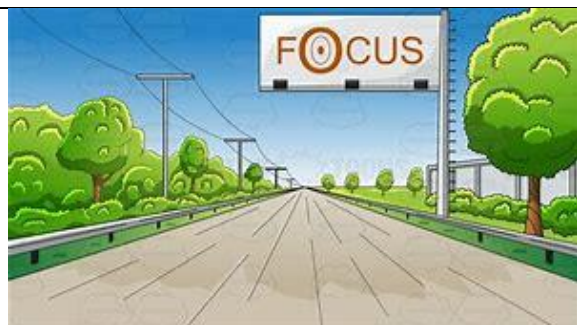
If you have read the background information and feel you have what it takes, we are looking forward to hearing from you!



Expressway Timeline

Date	Event
Autumn 2017	Commitment by the Chancellor for construction to commence on the missing link before the end of the Road Investment Strategy (RIS2) in 2025
2018	Corridor announcement
Autumn 2019	Public consultation on route options*
2020	Preferred route announcement*
2025	Construction starts*
2030	New link opens to the public

*Indicative timetable, subject to preferred route options

**East West Rail – Timeline****What is being proposed?**

East West Rail Western Section will re-establish a passenger and freight railway between Oxford, Bedford, Milton Keynes, and Aylesbury. Phase 2 involves improving and reconstructing underused and disused sections of the former railway and represents a significant piece of infrastructure investment.

Why do we need to build this?

This scheme will enhance the rail network, create more journey opportunities with reduced journey times and better connections to the Great Western, West Coast and Midland Main Line services, avoiding the need to travel via London. It will reconnect major centres including, Aylesbury, Milton Keynes, Bedford, Bicester, Oxford.

What are the main benefits?

The East West Rail scheme will support economic growth through residential and commercial development along the line of route, boosting business growth and attracting new business and inward investment. The upgrade of the route will provide additional network capacity to accommodate growth in freight and passenger markets by connecting the Oxford to Bedford railway with the Great Western, West Coast and Midland Main Lines.

Who pays for it?

The project is funded by the Department for Transport and by a £45m contribution from the East West Rail Consortium.

What is the new EWR Company? And what is their role in delivering the project?

The East West Railway Company has been formed by the Secretary of State for Transport to optimise the delivery of the East West Railway. This team reviewed the East West Rail proposals and led a value engineering and programme delivery review that identified how the value and benefits from this project can be realised as quickly as is possible. The new EWR Company will run Britain's first integrated rail operation for decades and be a separate organisation to Network Rail. The Company is looking at how the EWR route can be delivered and maintained.

How many EWR2 trains will run and to what destinations?

In addition to existing train services, there will be new services from:

Oxford and Milton Keynes; stopping at Oxford Parkway, Bicester, Winslow and Bletchley. There will be two trains each way per hour.

Oxford and Bedford; stopping at Oxford Parkway, Bicester, Winslow, Bletchley, Woburn Sands and Ridgmont. There will be one train each way per hour.

Milton Keynes and Aylesbury with stops anticipated at Bletchley, Winslow, and Aylesbury Vale Parkway. There will be one train each way per hour.

When will construction start and trains begin to run?

Depending on funding, construction of the line between Bicester and Bletchley will start at the end of 2019 with trains operating from 2023.



**HOLOCAUST
MEMORIAL
DAY TRUST**

You are invited to a Commemoration of Holocaust Memorial Day

to be held at
Milton Keynes Council
Civic Offices
1 Saxon Gate East
Central Milton Keynes, MK9 3EJ
on
Wednesday, 30 January 2019

at
6.15pm

Please RSVP by ringing 01908 253601,
or by e-mail to mayorsoffice@milton-keynes.gov.uk
For more information about Holocaust Memorial Day,
please visit: www.hmd.org.uk



5 Year Land Supply

In light of the recent Secretary of State (SoS) decision (December 2018) on the Section 78 appeal for planning permission for residential-led development at 'Land to the east of Newport Road and to the east and west of Cranfield Road at Woburn Sands', and the update to the National Planning Policy Framework (NPPF), the Council have undertaken a review and update of their current Five Year Housing Land Supply (5YHLS) position.

2. This review has also taken account of the current position of Plan:MK, the Council's new local plan, which has been at examination since April 2018 and is still on course for adoption in March 2019.

3. The note attached to this report outlines the considerations the Council has made in reviewing the 5YHLS both in terms of housing requirement and supply, and provides an up-to-date position which will be used in decision making in advance of the adoption of Plan:MK.



Milton Keynes Council is asking for anyone involved or interested in 'alternative provision education' to share views and evidence as part of an upcoming Scrutiny Task and Finish Group.

Task and Finish Groups undertake in-depth investigations so that councillors are better able to scrutinise council or partner actions on a particular topic of local importance. They call on the help of internal and external witnesses to provide evidence.

One group is looking into alternative provision education at primary school level. Alternative provision educates young people who do not attend mainstream school for a variety of reasons such as school exclusion, behaviour issues, school refusal, or illness. Instead, teaching happens in settings such as pupil referral units.

The Department for Education has found that pupils across the UK claiming free school meals are around four times more likely to receive a permanent or fixed period exclusion than those who are not eligible. Pupils with identified special educational needs account for almost half of all exclusions.

Boys are around three times more likely to receive an exclusion than girls.

Cllr David Hopkins is Chair of the Scrutiny Task and Finish Group examining the local picture. He said:

"Some of the most disadvantaged young people in our local community are educated through alternative provision and we want to establish whether they are receiving the best possible support in MK.

"Students in alternative provision are far less likely to achieve good exam results, find well-paid jobs or go on to further study.

"As a council dedicated to promoting social justice, we are committed to examining these issues in our inquiry and pressing Government, MK Council's Cabinet, local schools and others to do all they can to improve educational outcomes and life chances.

"Every student, whatever their background, should be given the chance to climb the educational ladder of opportunity.

"In addition to looking at the quality of their education and the outcomes of these students, the Committee will also look at safeguarding and resources within AP, various models in the provision of AP and regulation of independent providers."

The Task and Finish Group looking at alternate provision is seeking written submissions or offers to provide evidence in person by 1 February 2019.

They are particularly interested in hearing from people on the following issues:

- Routes into alternative provision
- The quality of teaching in alternative provision (including pupil referral units)
- Educational outcomes and destinations of students
- Safety, accommodation, and provision of resources for students
- In-school alternatives to external alternative provision
- Regulation of independent providers

To make a submission please contact Overview and Scrutiny Officer, Elizabeth Richardson, at Elizabeth.Richardson@milton-keynes.gov.uk or by post to:

Elizabeth Richardson

Re: Alternative Provision Education in the Primary Sector

Democratic Services

Milton Keynes Council,
Civic Offices
1 Saxon Gate East
Milton Keynes MK9 3EJ



Claire Poulton

Greensand Country Landscape Partnership

BRCC is the accountable body for the Greensand Country Landscape Partnership, a new Partnership being established with funding from the Heritage Lottery Fund. Greensand Country comprises the Greensand Ridge (a 35 mile-long narrow wooded sandstone ridge to the south of Bedford), and the Flit Valley.

We are thrilled to have gained funding from the Heritage Lottery Fund to deliver a Landscape Partnership programme and an array of exciting projects which will help us raise awareness of the heritage value of the Greensand Country and to reverse the gradual decline in the distinct landscape character of this beautiful and loved place.

The Heritage Lottery Fund awarded us this funding in January 2017. The programme will run until June 2021.

‘Greensand Country’ is an island of distinctive, beautiful and loved countryside, based on a band of higher ground stretching from Leighton Buzzard to Gamlingay, rising out of the surrounding clay vales. It contains all of Bedfordshire’s remaining heathland, more than half of its woodland, and more surviving historic parkland than any other landscape in the country, often surrounding notable manor houses. This landscape character is a legacy of its underlying Greensand geology, which led to much of it being regarded as ‘marginal land’ not suitable for agriculture, as well as its management over centuries by major estates.

However, the area’s distinctiveness has been weakening over decades due to modern development and the changing economics of land use. Key habitats are becoming fragmented and unsustainable in the longer term; views both of and from the area are being lost or impaired; houses are being built of the wrong vernacular; and traditional heritage skills are dying out. Just as significantly, there is a low level of awareness locally of the significance of the area’s landscape value and heritage.

The Greensand Country Landscape Partnership has been formed by a range of partners in the area to work with landowners and local communities to take a joined up approach to meeting the challenges in the area. Our vision is for the Greensand Country to be a living and working landscape that is cherished by present and future generations. By 2021 we will have reversed the gradual decline in the area’s landscape character, and created a strong, community led partnership and strategic framework to promote the area’s interests and secure the necessary long-term financial and community investment to sustain the area’s distinctive natural and built heritage.

The vision

The vision is that by 2020 the Greensand Ridge will become a living and working landscape that is cherished by present and future generations and we will have reversed the gradual decline in the area's landscape character. We are working towards creating a strong community led partnership and strategic framework to promote the area's interests and to secure the necessary investment to sustain the area's distinctive local charm, natural character and built heritage.

Our aims are:

Our vision is for the Greensand Country to be a living and working landscape that is cherished by present and future generations. By 2021 we will have reversed the gradual decline in the area's landscape character, and created a strong, community led partnership and strategic framework to promote the area's interests and secure the necessary long-term financial and community investment to sustain the area's distinctive natural and built heritage.



Clear Sacks

The Council is confident with the changes in the delivery method for sacks that they are now on top of the requests that are coming through, if however you have properties that have experienced issues with receiving them prior to the changes last week then please let me know as I will be happy to arrange delivery of these myself.

Tony Brown - Waste Services Officer

Milton Keynes Council, Milton Keynes Waste Recovery Park, 9 Dickens Road, Old Wolverton, Milton Keynes, MK12 5QF

email: Tony.Brown@milton-keynes.gov.uk

Contacts

- For all Serco Landscape contract works enquiries, please contact Euan Darling or Mansour Moini - Please contact the helpline via the link below for new issues.
- For Tree (TPO TCA and Insurance related) enquiries contact Robert Widd.
- For Rights of Way, please contact Rosie Armstrong or James Walsh.

- For High Hedges enquiries and development related Tree issues please contact Stephen Narborough.
- For Planning, S106, Biodiversity and Ecology issues please contact Diane Evans or Phil Snell.
- For Flood Strategy please contact Ashish Patel.

To log a new issue or enquiry, go to: <https://my.milton-keynes.gov.uk/>



Roadworks - Parklands

Please be advised that I have received an application for a road closure along Greensands View, Woburn Sands in February.

It has been requested that the following road will be closed from 4th February 2019 to 5th March 2019. The road closure is necessary to allow the Planning and resurfacing works to the carriageway.

I welcome any comments you may have on this before I start processing the application.

If you have any further questions please do not hesitate to contact me.

Steven Shearer - Network Support Officer (Highways Services)

Direct: +44 (0)1908 253428

Switchboard: +44 (0)1908 691691

Email : Steven.Shearer2@milton-keynes.gov.uk

Visit Online : <http://www.milton-keynes.gov.uk/streets-transport-and-parking>

--	--	--	--	--	--

-
- The deadline for primary school admissions for children starting school in September 2019 is the 15 January. Find out more and apply online here: <https://bit.ly/2EamquZ>
-

How to recycle your real Christmas tree...

You can recycle your real Christmas tree in MK in your green wheelie bin.

If the tree cannot fit inside the wheelie bin with the lid closed then you can leave it next to the wheelie bin on collection day.

If your tree is taller than 6 foot you will need to cut it in half and then place inside the wheelie bin.

Remove ALL decorations beforehand.

Alternatively you can take it to one of the three Household Waste Recycling Centres (tips) in MK and put in the green waste section.



Duncan Sharkey (Corporate Director – Place) will be leaving MK Council following his recent appointment to a role at the Royal Borough of Windsor and Maidenhead. The Council wishes Duncan well and thanks him for his service to Milton Keynes over the last three and a half years.

More information on the future leadership arrangements will follow shortly

David Hopkins / Victoria Hopkins / Alice Jenkins

***MKC Senior Staff List Corporate Core - MKC Senior Team
2019***

Chief Executive	Michael Bracey	01908 252200
------------------------	-----------------------	---------------------

Contact Us www.milton-keynes.gov.uk	Email: <i>firstname.surname@milton-keynes.gov.uk</i>	Tel: 01908 691691
---	--	--------------------------

Resources Corporate Director	Paul Simpson	01908 253374
Service Director: Legal and Democratic Services	Sharon Bridglalsingh	01908 252095
Service Director: Finance and Resources	Steve Richardson	01908 252756
Head of Revenues and Benefits	Robin Bates	07738 636820
Assistant Director: Audit & Risk Management	Duncan Wilkinson	01908 252089
Service Delivery Manager: ICT	Hazel Lewis	01908 254117
Capital Programme Director	Kamran Rashid	07792 540523
Head of HR	Musrat Zaman	01908 254278
Head of Customer Service, Digital and Transformation	Vacant from November 2017	
People Corporate Director	Michael Bracey	01908 258041
Director of Public Health (Shared with Bedford & Central Bedfordshire Councils)	Muriel Scott	01908 254241
Service Director: Children's Services	Mac Heath	01908 253121
Service Director: Adult Services	Victoria Collins	01908 253270
Assistant Director: Joint Commissioning	Mick Hancock	01908 252091
Place	Duncan Sharkey	01908 253411

Corporate Director		
Service Director: Housing & Regeneration	Michael Kelleher	01908 254167
Service Director: Public Realm Services	Tom Blackburne-Maze	01908 252213

Service Director: Planning, Culture and Infrastructure	Vacant from August 2017	
Head of Economy and Culture	Pam Gosal	01908 252192
Head of Placemaking	Neil Sainsbury	01908 252708
Head of Development Management	Brett Leahy	01908 252609
MKDP Chief Executive	Charles Macdonald charles.macdonald@mkdp.co.uk	01908 253899
Independent Chair	John Duggan john.duggan@mkdp.co.uk	01908 253405
Director of Strategy & Futures	Geoff Snelson	01908 252665

Acting Service Director: Policy, Insight & Communication s	Sarah Gonsalves	01908 252275
Head of Communications	Kellie Evans	01908 252413