

Unitary Councillor Report

(Snippets) Report from Cllr David Hopkins, Cllr Victoria Hopkins & Cllr Alice Jenkins – Representing Wavendon at MK Council

May 2019

Milton Keynes Council, in partnership with Wavendon Parish Council, has set up a Project Board to deliver new leisure and community facilities for residents of Wavendon and the Strategic Land Allocation area.

The facilities will comprise of a new multi-purpose community building and multiple grass sports pitches.

The new building, which is still to be designed, will be conveniently located adjacent to the proposed sports pitches that are soon to be constructed off Stockwell Lane. Please see the map below.

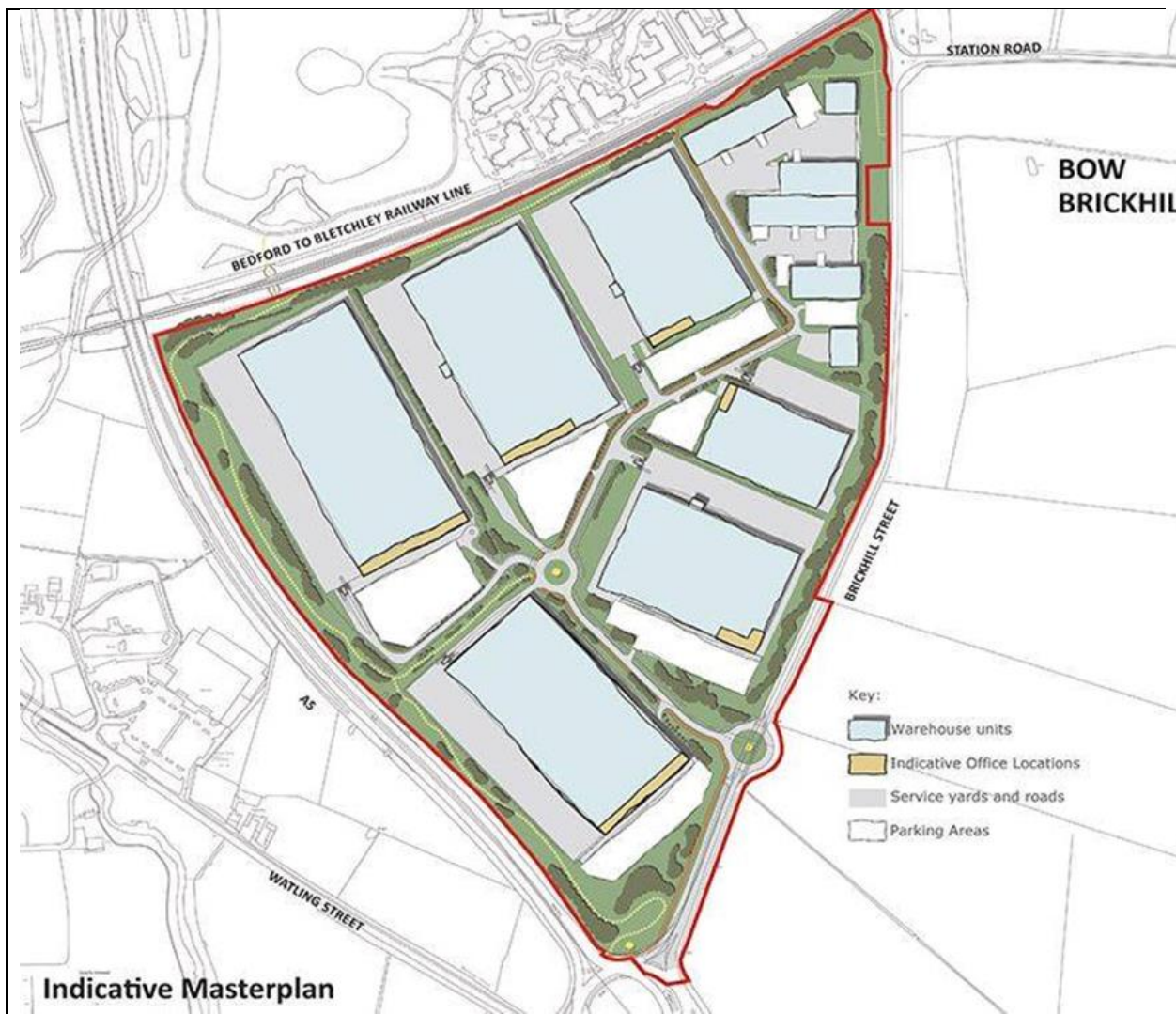
Funded by housing developer contributions, the new facilities that are expected to be constructed in 2021/22 are being provided to ensure that new residents moving into the Strategic Land Allocation have access to facilities that enable them to lead socially and physically active lifestyles.

Project updates will be provided regularly via the Parish Newsletter. However, if you require any further information please contact the clerk of the Parish Council.



South Caldecotte - Plan:MK allocates land on the south-eastern edge of Milton Keynes for a strategic employment site, providing a minimum of 195,000 sq m of B2/B8 employment space. The Draft South Caldecotte Development Framework has been prepared to ensure that the land allocation is brought forward in a strategic and comprehensive manner.

<p>Draft South Caldecotte Development – consultation opened 8 May 2019 and will run for 8 weeks</p>	<p>SOUTH CALDECOTTE DEVELOPMENT FRAMEWORK SUPPLEMENTARY PLANNING DOCUMENT (SPD)</p> <p>South Caldecotte has been allocated for employment development in Plan:MK. The Development Framework SPD will provide detailed guidance on the development of the site.</p> <p>The consultation documents and further information on this consultation can be accessed online at: https://www.milton-keynes.gov.uk/consultations</p>
---	---





From PC Tony Deeble - Have your say meetings have been scheduled to **take place at MK SNAP** on the following dates (all start at 10.30 am).

June 6th
July 4th
August 8th
Sept 5th
Oct 3rd
Nov 7th
Dec 5th

The next Community Forum meeting is yet to be arranged. I will be speaking with the Chair, Ben Dawson before the end of the month with a view to arranging the next meeting before the end of June.

Contact: Tony Deeble | PC 218 | Milton Keynes Neighbourhood Policing Team South | NS Danesborough & Walton

Telephone 101 Mobile 07813 897 275
Address Fire Station, Childs Way,
Milton Keynes Village
Milton Keynes.



DRAFT AFFORDABLE HOUSING SUPPLEMENTARY PLANNING DOCUMENT (SPD)

This SPD sets out guidance to support applicants and decision takers when considering the provision of affordable housing within applicable development schemes.

The consultation documents and further information on this consultation can be accessed online at: <https://www.milton-keynes.gov.uk/planning-and-building/planning-policy/draft-affordable-housing-spd>



DRAFT PLANNING OBLIGATIONS SUPPLEMENTARY PLANNING DOCUMENT (SPD)

This SPD sets out Milton Keynes Council's policy for securing Planning Obligations from new developments that require planning permission.

The consultation documents and further information on this consultation can be accessed online at: <https://www.milton-keynes.gov.uk/planning-and-building/planning-policy/draft-planning-obligations-supplementary-planning-document-spd>



St Mary's Wavendon CofE Primary School

The Governors, alongside the Headteacher of St. Mary's, continue to have a great sense of pride in the school's achievements. In October 2018, the school achieved recognition of maintaining a 'good' judgement alongside the "outstanding" rating by the SIAMS (Statutory Inspection of Anglican and Methodist Schools) inspector in July 2017.

Pupil numbers have declined slightly this year in line with the falling birth rate in Milton Keynes, however pupils from the new Eagle Farm development are already joining the school prior to our move there in September 2019. There are currently 84 pupils on role in the school.

Visitors to our school often comment on the loving and nurturing atmosphere embedded within our distinctively Christian values. Standards of attainment and progress throughout the school are consistently good, with all of our children encouraged to persevere and do their best. Improvements are key and we strive to aim high, reviewing our curriculum and provision annually to ensure that we meet the needs of all our learners.

With our imminent move to the Eagle Farm development, our work with the local and wider community continues to be a focus of ours. Despite moving out of the village at the end of this academic year, our work with St Mary's Church, congregation and clergy is even more important to us in order to remain a strong part of the St Mary's family. We look forward to continuing our lead and attendance in a variety of events such as Harvest, Christmas Nativity, Toy Service, Christingle, Easter Cracked and Summer fete throughout the forthcoming year.

The planned school opening and transfer from the village to Eagle Farm in September 2019 is currently on track, and we continue to work closely with the Local Authority and Wilmott Dixon to ensure that the transfer from one premise to another is a smooth one. As we begin the next part of

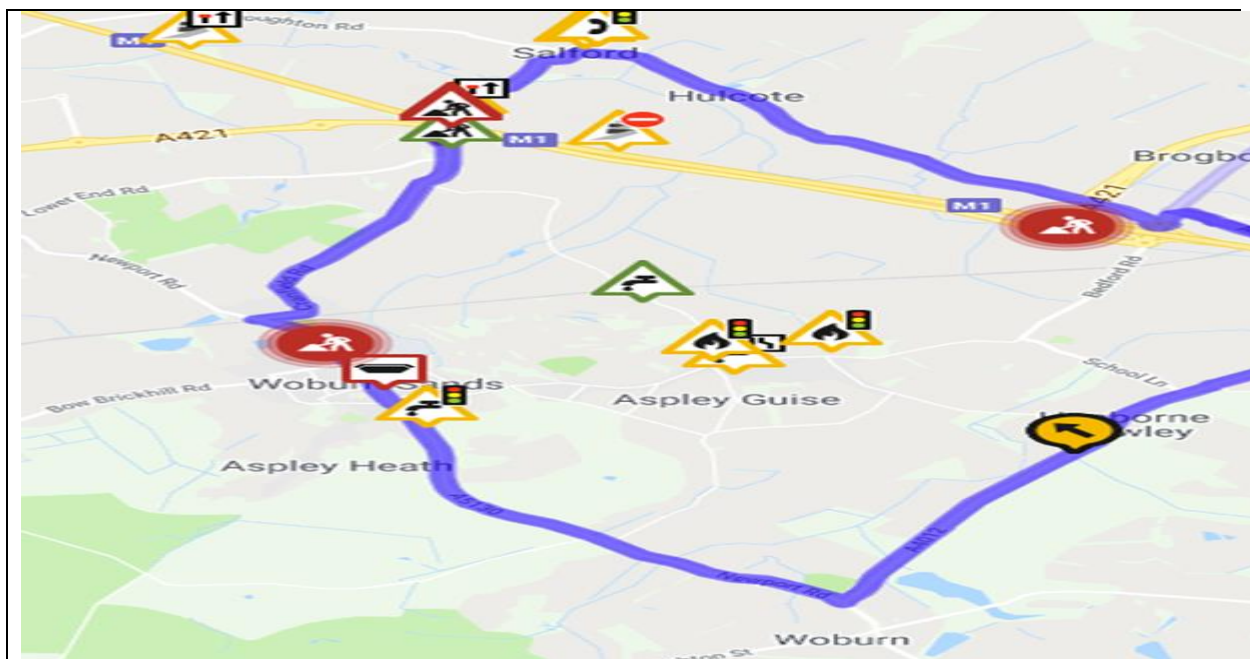
the St Mary's journey, we remain committed to promoting our distinctiveness as a Church of England Primary School, and to increase our provision through:

- Wrap-around care;
- Forest school and outdoor provision;
- Ability to transport our pupils within Milton Keynes using the school minibus;
- On-site hot meal provision;
- School holiday activities;
- Extra-curricular opportunities;
- Well-being and mental health support;
- Outreach work with St Mary's Church

We are proud to be the current custodians of St Mary's School as it moves to its third site, and will endeavour to do the very best for our children and community.

Social Network Reports for May

- Road closure on Cranfield Road
- A421 dualling issues
- Travellers in Wavendon



Cranfield Road, Wavendon (Road Closure)

Please note that the above road will be closed from 13th May 2019 for a year. This is to enable the bridge to be taken down and reconstructed due to the dual carriageway works of the A421. Diversion map above.

Olivia Bessenay - Streetworks Coordinator- Highways

Central Bedfordshire Council Priory House, Monks Walk, Chicksands, Shefford, Bedfordshire, SG17 5TQ

Direct Dial: 0300 300 5718 | Internal:75718 | Email:

olivia.bessenay@centralbedfordshire.gov.uk

Plan:MK

Council adopts Plan:MK The legal challenge period for Plan:MK closed last week, and we are not aware of any challenges that were lodged.

There are no further updates on the SEMK Development Framework, although I am trying to arrange a programme of dates for the Local Stakeholder Group as was discussed at the Danesborough Forum.

Consultation on the South Caldecotte Development Framework commences on 8 May for eight weeks.

Consultation on the Site C Development Brief closed on 29 April.

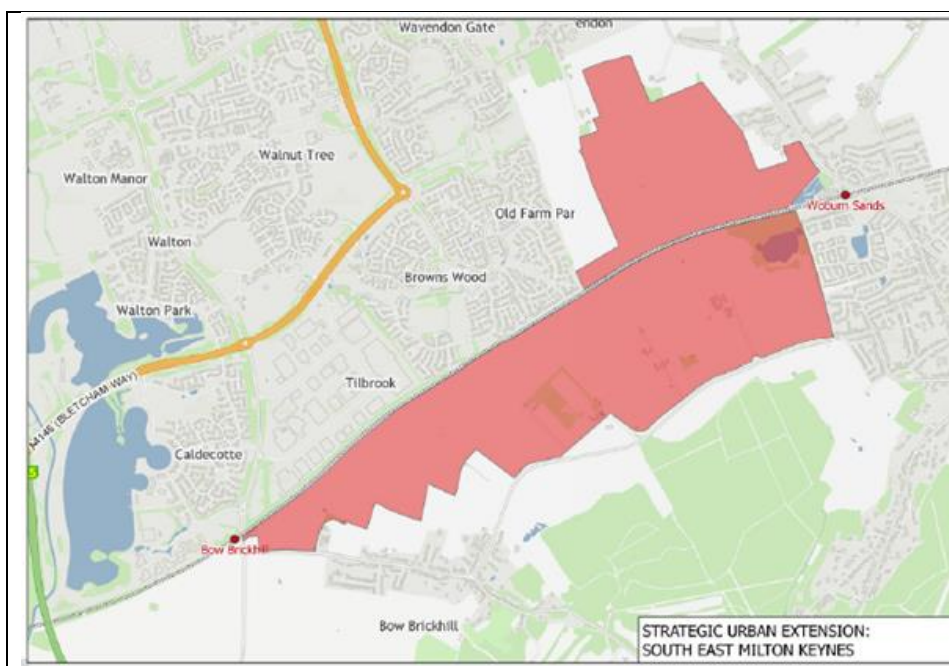
Andrew Turner - Senior Planning Officer | Development Plans

T: 01908 254892

M: 07775 110432

E: andrew.turner@milton-keynes.gov.uk

W: <https://www.milton-keynes.gov.uk/planning-and-building/>



South East Milton

Keynes Strategic Urban Extension (or SEMK) is a draft allocation within Plan:MK, covering an area of land approximately 210 hectares in size encompassed by Tilbrook, Browns Wood and Wavendon to the North, Woburn Sands to the East, the Green Sands Ridge to the south, and Bow Brickhill to the west.

The draft allocation within Plan:MK, under Policy SD13, allocates the land for around 3,000 homes, 7 Gypsy and Traveller pitches, and a range of social and green infrastructure provision.

Contact: Andrew Turner - Senior Planning Officer | Development Plans (T: 01908 254892)

M: 07775 110432 - E: andrew.turner@milton-keynes.gov.uk

W: <https://www.milton-keynes.gov.uk/planning-and-building/>

PLANNING



Three-quarters of residents in the proposed "Oxford-Cambridge Arc" fear the development will harm the local countryside, a survey suggests.

Proposals have been unveiled for one million homes by 2050 along with rail and road links between the two university cities in an arc through Oxfordshire, Buckinghamshire, Northamptonshire, Bedfordshire and Cambridgeshire.

But the Campaign to Protect Rural England (CPRE) claims building a million new homes in the region would swallow up an area of countryside the size of Birmingham and the project has not been properly assessed or consulted on.

A poll of more than 1,500 residents in the affected counties by Survation for the CPRE found 74% thought the development would lead to damage to the area's countryside and natural environment.

While more than half said they agreed that a million new homes will be necessary for a growing population and would contribute to economic growth, 59% did not support the scale of house-building proposed in the arc.

Protecting and improving the natural environment including wildlife and landscape, and providing more affordable housing for poorer people topped the list of important issues that any plans for growth in the area should address.

And there was overwhelming support for any new house-building to prioritise the needs of people working locally, rather than retirees or commuters to London or elsewhere.

Paul Miner, head of strategic plans and devolution at CPRE, said:

"It is unthinkable that the Government would consider such a vast development proposal, which will have huge and damaging consequences for the countryside and environment, without any sort of assessment of its impact. People are right to be concerned.

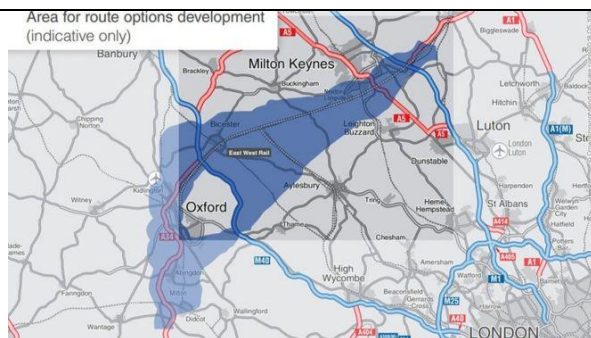
"Rather than ignoring people and the environment in a rush for economic growth, consideration of the full effects on communities and the environment must be given priority. "Before the Government takes these proposals any further, it is imperative that a strategic environmental assessment is carried out, along with a full public consultation on the proposals."

- Paul Miner

The Government said it was committed to protecting and maximising opportunities to enhance our natural environment as it worked in partnership with authorities between Oxford and Cambridge to plan much-needed, high quality homes

“Handled sensitively the Oxford Cambridge arc can be an example to the world of how to both build large numbers of homes for a generation crying out for them, while also leaving the environment in a better state than we found it. This is the challenge and I hope that everyone will join us in rising to it.”

- Minister of State for Housing Kit Malthouse MP

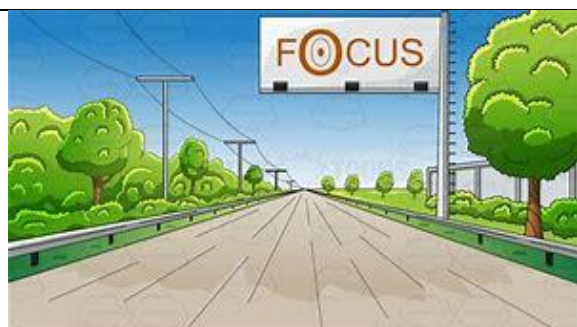


Expressway Timeline

Date	Event
Autumn 2017	Commitment by the Chancellor for construction to commence on the missing link before the end of the Road Investment Strategy (RIS2) in 2025
2018	Corridor announcement
Autumn 2019	Public consultation on route options*

2020	Preferred route announcement*
2025	Construction starts*
2030	New link opens to the public

*Indicative timetable, subject to preferred route options



East West Rail – Timeline

What is being proposed?

East West Rail Western Section will re-establish a passenger and freight railway between Oxford, Bedford, Milton Keynes, and Aylesbury. Phase 2 involves improving and reconstructing underused and disused sections of the former railway and represents a significant piece of infrastructure investment.

Why do we need to build this?

This scheme will enhance the rail network, create more journey opportunities with reduced journey times and better connections to the Great Western, West Coast and Midland Main Line services, avoiding the need to travel via London. It will reconnect major centres including, Aylesbury, Milton Keynes, Bedford, Bicester, Oxford.

What are the main benefits?

The East West Rail scheme will support economic growth through residential and commercial development along the line of route, boosting business growth and attracting new business and inward investment. The upgrade of the route will provide additional network capacity to accommodate growth in freight and passenger markets by connecting the Oxford to Bedford railway with the Great Western, West Coast and Midland Main Lines.

Who pays for it?

The project is funded by the Department for Transport and by a £45m contribution from the East West Rail Consortium.

What is the new EWR Company? And what is their role in delivering the project?

The East West Railway Company has been formed by the Secretary of State for Transport to optimise the delivery of the East West Railway. This team reviewed the East West Rail proposals and led a value engineering and programme delivery review that identified how the value and benefits from this project can be realised as quickly as is possible. The new EWR Company will run Britain's first integrated rail operation for decades and be a separate organisation to Network Rail. The Company is looking at how the EWR route can be delivered and maintained.

How many EWR2 trains will run and to what destinations?

In addition to existing train services, there will be new services from:

Oxford and Milton Keynes; stopping at Oxford Parkway, Bicester, Winslow and Bletchley. There will be two trains each way per hour.

Oxford and Bedford; stopping at Oxford Parkway, Bicester, Winslow, Bletchley, Woburn Sands and Ridgmont. There will be one train each way per hour.

Milton Keynes and Aylesbury with stops anticipated at Bletchley, Winslow, and Aylesbury Vale Parkway. There will be one train each way per hour.

When will construction start and trains begin to run?

Depending on funding, construction of the line between Bicester and Bletchley will start at the end of 2019 with trains operating from 2023.

**Speed Reduction Plan**

Please note that the website is now live and accepting applications for 20mph speed limits:

<https://www.milton-keynes.gov.uk/highways-and-transport-hub/road-safety/introduction-of-20-mph-speed-limits-into-residential-areas>

**Clear Sacks**

The Council is confident with the changes in the delivery method for sacks that they are now on top of the requests that are coming through, if however you have properties that have experienced issues with receiving them prior to the changes last week then please let me know as I will be happy to arrange delivery of these myself.

Tony Brown - Waste Services Officer

Milton Keynes Council, Milton Keynes Waste Recovery Park, 9 Dickens Road, Old Wolverton, Milton Keynes, MK12 5QF

email: Tony.Brown@milton-keynes.gov.uk

Contacts

- For all Serco Landscape contract works enquiries, please contact Euan Darling or Mansour Moini - Please contact the helpline via the link below for new issues.
- For Tree (TPO TCA and Insurance related) enquiries contact Robert Widd.
- For Rights of Way, please contact Rosie Armstrong or James Walsh.
- For High Hedges enquiries and development related Tree issues please contact Stephen Narborough.
- For Planning, S106, Biodiversity and Ecology issues please contact Diane Evans or Phil Snell.
- For Flood Strategy please contact Ashish Patel.

To log a new issue or enquiry, go to: <https://my.milton-keynes.gov.uk/>





Roadworks - The new interactive service allows you to search for any planned works by area, road name, ward or parish, road type or reason. You can also see the current closures and those scheduled for the next two weeks.

Area	Road name	Start Date	Start Time	End Date	Finish Time	Type
WOBURN SANDS	High Street	07/05/19	7.30am	09/05/19	6:30pm	TRAFFIC SIGNALS (Multi-Way)
WOBURN SANDS	Chapel Street	07/05/19	24 hours	09/05/19	24 hours	TRAFFIC SIGNALS (Multi-Way)
WOBURN SANDS	Downham Road	03/05/19	24 hours	08/05/19	24 hours	ROAD CLOSURE
WOBURN SANDS	Tavistock Close	03/05/19	24 hours	08/05/19	24 hours	GIVE & TAKE
WOBURN SANDS	DOWNHAM ROAD	09/05/19	9:30am	09/05/19	12:30pm	ROAD CLOSURE
WOBURN SANDS	THEYDON AVENUE	10/05/19	9:30am	10/05/19	12:30pm	ROAD CLOSURE
WAVENDON	Walton Road	28/05/19	24 hours	30/05/19	24 hours	ROAD CLOSURE

This tool will help you check what is planned for a particular route or area so you can avoid any issues that may affect your journey. The information is updated every week.

Some works may be subject to changes due to unforeseen circumstances such as a road traffic collision or incident, weather conditions or operational reasons. Check the Highways View as an

Alternatively you can view the information shown in the Highways Register through a Google map based system on www.roadworks.org

Steven Shearer - Network Support Officer (Highways Services)

Direct: +44 (0)1908 253428

Switchboard: +44 (0)1908 691691

Email : Steven.Shearer2@milton-keynes.gov.uk

Visit Online : <http://www.milton-keynes.gov.uk/streets-transport-and-parking>

David Hopkins / Victoria Hopkins / Alice Jenkins

MKC Senior Staff List Corporate Core - MKC Senior Team 2019

Chief Executive	Michael Bracey	01908 252200
------------------------	-----------------------	---------------------

Contact Us www.milton-keynes.gov.uk	Email: firstname.surname@milton-keynes.gov.uk	Tel: 01908 691691
---	---	--------------------------

Resources Corporate Director	Paul Simpson	01908 253374
Service Director: Legal and Democratic Services	Sharon Bridglingsingh	01908 252095
Service Director: Finance and Resources	Steve Richardson	01908 252756
Head of Revenues and Benefits	Robin Bates	07738 636820
Assistant Director: Audit & Risk Management	Duncan Wilkinson	01908 252089
Service Delivery Manager: ICT	Hazel Lewis	01908 254117
Capital Programme Director	Kamran Rashid	07792 540523
Head of HR	Musrat Zaman	01908 254278
Head of Customer Service, Digital and Transformation	Vacant from November 2017	
People Corporate Director	Michael Bracey	01908 258041
Director of Public Health (Shared with Bedford & Central Bedfordshire Councils)	Muriel Scott	01908 254241
Service Director: Children's Services	Mac Heath	01908 253121

Service Director: Adult Services	Victoria Collins	01908 253270
Assistant Director: Joint Commissioning	Mick Hancock	01908 252091
Place Corporate Director	Duncan Sharkey	01908 253411
Service Director: Housing & Regeneration	Michael Kelleher	01908 254167
Service Director: Public Realm Services	Tom Blackburne-Maze	01908 252213

Service Director: Planning, Culture and Infrastructure	Vacant from August 2017	
Head of Economy and Culture	Pam Gosal	01908 252192
Head of Placemaking	Neil Sainsbury	01908 252708
Head of Development Management	Brett Leahy	01908 252609
MKDP Chief Executive	Charles Macdonald charles.macdonald@mkdp.co.uk	01908 253899
Independent Chair	John Duggan john.duggan@mkdp.co.uk	01908 253405
Director of Strategy & Futures	Geoff Snelson	01908 252665

Acting Service Director: Policy, Insight & Communication s	Sarah Gonsalves	01908 252275
Head of Communications	Kellie Evans	01908 252413

CHANGES TO THE COUNCIL'S SENIOR MANAGEMENT STRUCTURE

Our current three directorate model plus small 'corporate core' was put in place four years ago. While this has helped teams share some closer practices and standards, we're yet to achieve our ambition for fully joined up thinking and working across the whole organisation. This can be frustrating for us, for councillors and for service users.

A new senior management structure is being developed that will help us operate more effectively as one council. The proposals are:

A new Deputy Chief Executive role will lead our critical support services, as well as a number of other business areas.

Instead of the current structure of three Corporate Directors and ten Service Directors, services will be led by nine Directors, who would all be regarded as 'chief officers' and full members of our Corporate Leadership Team (CLT). As you may be aware Duncan Sharkey has left the Council and we will not be replacing either his former role (Corporate Director – Place) or the role of Corporate Director – People.

The corporate core would be replaced with a new Chief Executive's Office, led by an Assistant Chief Executive (replacing the current role of Service Director – Policy, Insight and Communications), whose focus will be on improving organisational effectiveness and performance. Public Health will move into the Chief Executive's Office.

Subject to political agreement, the new structure could be in place by early March. The CEO (Michael Bracey) will share full details then, including a detailed breakdown of who will be leading on specific areas.

Corporate Leadership Team - March 2019

Chief Executive - Michael Bracey, Head of Paid Service
Director - Health and Social Care Integration - Jill Wilkinson
Director - Finance and Resources - Steve Richardson
Director - Law and Governance - Sharon Bridglingsingh
Director – Environment and Property - Stuart Proffitt
Director - Growth, Economy and Culture - Tracy Darke
Director - Adult Services - Victoria Collins
Director - Children's Services - Mac Heath
Director - Housing and Regeneration - Michael Kelleher
Director - Strategy and Futures - Geoff Snelson
Director - Policy, Insight and Communications - Sarah Gonsalves
Director - Public Health - Muriel Scott

Deputy – Chief Executive - Paul Simpson

<p>Finance and Resources</p> <p>Professional finance Revenue and benefits HR ICT Customer services LGSS Audit and risk</p>
<p>Environment and Property</p> <p>Highways Waste and Recycling Transportation Property Facilities Management Regulatory services Health and Safety</p>
<p>Growth, Economy and Culture</p> <p>Place Making Planning Economic development Arts and Heritage Historic environment Leisure Sports development</p>
<p>Law and Governance</p> <p>Legal services Democratic services Elections Civic events and mayoralty Councillor support Governance</p>
<p>Policy, Insight and Communications</p> <p>Policy Partnerships Performance Communications Information Governance Emergency Planning Community safety</p>
<p>Housing and Regeneration</p> <p>Tenancy management Repairs and maintenance Tackling homelessness Strategic housing Regeneration and development Private sector housing Resident engagement and support</p>
<p>Children’s Services</p> <p>Schools Early years Youth and community Special needs and disability Safeguarding Family support Children in care Care Leavers</p>
<p>Adult Services</p> <p>Mental health Learning disability Physical disability Older people’s services Hospital discharge Adult safeguarding Commissioning</p>
<p>Public Health</p> <p>Health improvement Health protection Public health services Needs assessment Strategy and Futures</p>
<p>Strategy and Futures</p> <p>Delivery of MK2050 Strategy Regional Local Enterprise Partnership Oxford to Cambridge Arc</p>



Large Strategic Grant awarded to The Stables by MK Community Foundation!

MK Community Foundation are delighted to award The Stables Theatre in Milton Keynes a Large Strategic Grant of £95,000. The grant, which will be awarded over two years, will be used to fund an extensive programme designed to enhance the organisation's approach to working with D/deaf and disabled communities as participants, audience members and performers.

The Stables will work with national accessibility and disability specialists including Attitude is Everything and Graeae Theatre Company to create a bespoke training programme for The Stables' staff and its 200-strong volunteer base, and will also open up sessions to the wider cultural sector.

Jenny Sealey, Graeae Theatre's Artistic Director, has been appointed as Artist-in-Residence for next year's IF: Milton Keynes International Festival (17-26 July 2020) and will work with The Stables to build inclusivity into their future work, by creating an accessible and high quality programme for disabled artists.

To enable The Stables to reach out more effectively to local communities, an Engagement Manager will work with groups in Milton Keynes to breakdown some of the barriers to attending the arts. Specialist digital and technology systems will also be developed and tested with a view to improving access to live music events for disabled customers. The training, digital systems and artistic programme will be rolled out during next year's Festival.

MK Community Foundation are excited to be a part of this project which ultimately aims to ensure more people are able to enjoy the arts and to offer D/deaf or disabled people more creative opportunities by presenting positive role models and accessible workplaces and venues.

Monica Ferguson, Chief Executive & Artistic Director of The Stables said: "This is an important investment in our ambitions to enable us to engage with more people in exciting new ways, and we are immensely grateful to MK Community Foundation for their support and enthusiasm in helping us to work with some of the UK's most inspiring artists and organisations."